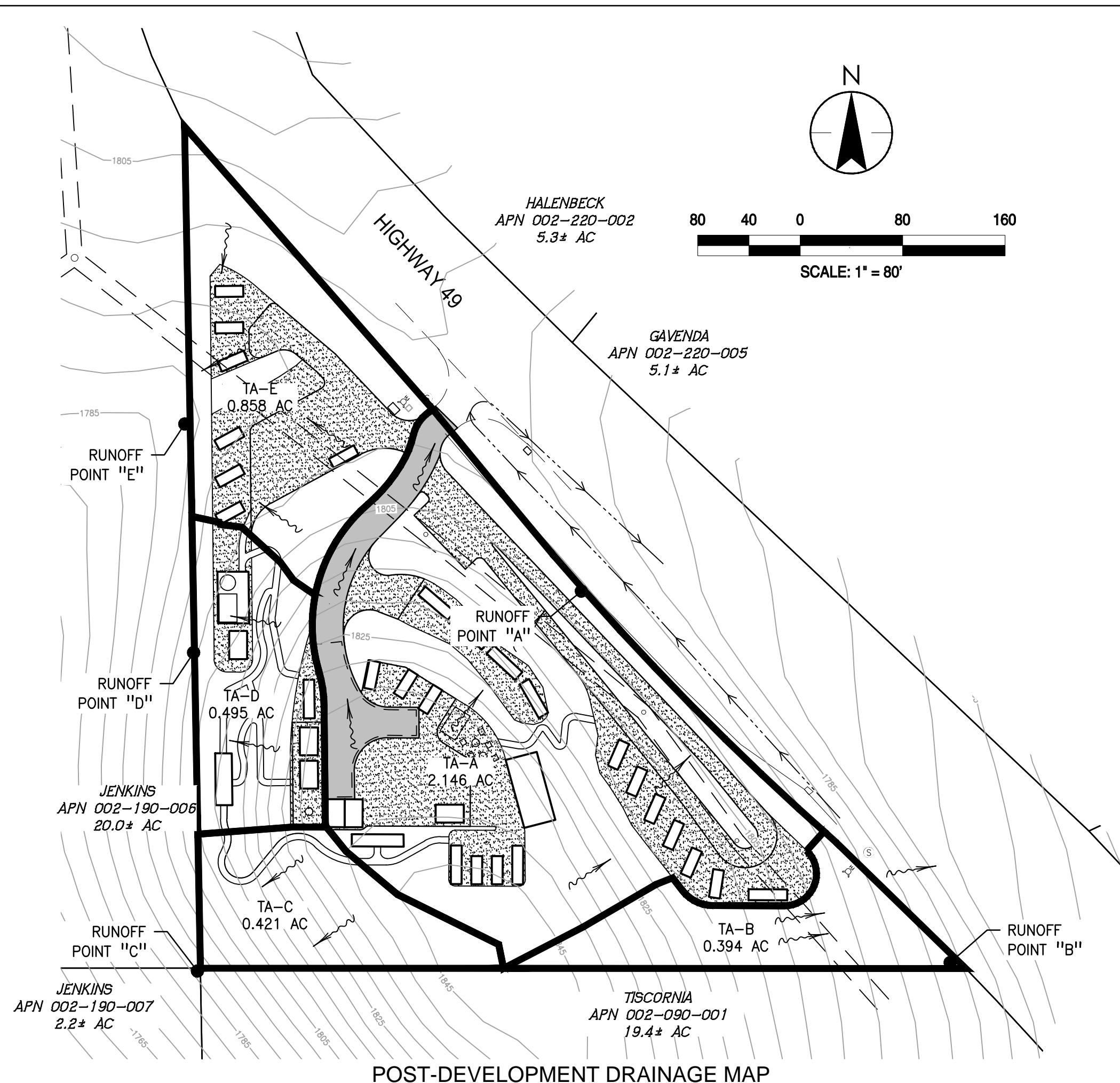


PRE-DEVELOPMENT DRAINAGE MAP



POST-DEVELOPMENT DRAINAGE MAP

DRAINAGE AREA AND RUNOFF SUMMARY

Runoff Point	Description	Pre-Development Condition					Post-Development Condition					Pre- vs. Post Change in Runoff Volume (ac-ft)
		Total Area (ac)	Pervious Area (sf) C=0.50	Impervious Area (sf) C=0.95	Composite "C"	Runoff Volume (ac-ft) R=0.77in	Total Area (ac)	Pervious Area (sf) C=0.50	Impervious Area (sf) C=0.95	Composite "C"	Runoff Volume (ac-ft) R=0.77in	
Runoff to Caltrans R/W	A	2.126	85,397	7,212	0.54	0.88	2.146	76,546	16,934	0.58	0.96	+0.09
	B	0.448	19,515	0	0.50	0.17	0.394	17,163	0	0.50	0.15	-0.02
	Sub-total: Runoff to Caltrans R/W:		2.574	104,911	7,212		1.05	2.540	93,708	16,934		1.11
Runoff to West Boundary of Project	C	0.454	19,776	0	0.50	0.17	0.421	17,542	797	0.52	0.17	-0.01
	D	0.423	17,940	486	0.51	0.17	0.495	16,358	5,204	0.61	0.23	+0.07
	E	0.863	37,592	0	0.50	0.33	0.858	36,076	1,298	0.52	0.34	+0.01
Sub-total: Runoff to West Boundary of Project:		1.740	75,308	486		0.67	1.774	69,976	7,299		0.74	+0.07
Grand Total:		4.314	180,220	7,698		1.72	4.314	163,685	24,233		1.85	+0.13

LEGEND

— WATERSHED BOUNDARY

— DRAINAGE FLOW

NOTES

- THIS DRAWING IS PRELIMINARY AND IS INTENDED FOR THE REVIEW OF LAND USE PERMITTING APPLICATIONS, ONLY. THE LAYOUT AND DRAINAGE PATTERNS SHOWN HEREIN MAY CHANGE AS A RESULT OF REFINEMENTS MADE DURING THE DESIGN PROCESS, AGENCY REQUIREMENTS, OR OTHER FACTORS.
- EXISTING CONTOURS SHOWN HEREIN WERE OBTAINED FROM UNITED STATES GEOLOGICAL SURVEY (USGS) 3D ELEVATION PROGRAM DATA, 1 ARC SECOND, PUBLISHED 02-07-2024, N38W121
- EXISTING PARCEL LINES ARE SHOWN BASED ON ASSESSOR'S PARCEL DATA. NOTE: ACTUAL PROPERTY AND PLAN AMENDMENT BOUNDARY WILL BE BASED ON A DETAILED BOUNDARY SURVEY AND MAY NOT MATCH THE BOUNDARY SHOWN IN THE ASSESSOR'S PARCEL MAPS.
- THIS DRAWING IS INTENDED TO DESCRIBE OVERALL DRAINAGE PATTERNS, ONLY. DETAILED INFORMATION AND LAYOUT OF EXISTING AND PROPOSED STORM WATER INFRASTRUCTURE (E.G. PIPELINES, CHANNELS, INLETS, GUTTERS) IS NOT INCLUDE HEREIN.

W:\12840100\civil\exhibits\20240828_drainage\20240828_drainage.dwg
 2024-08-29 17:59 By: christensen