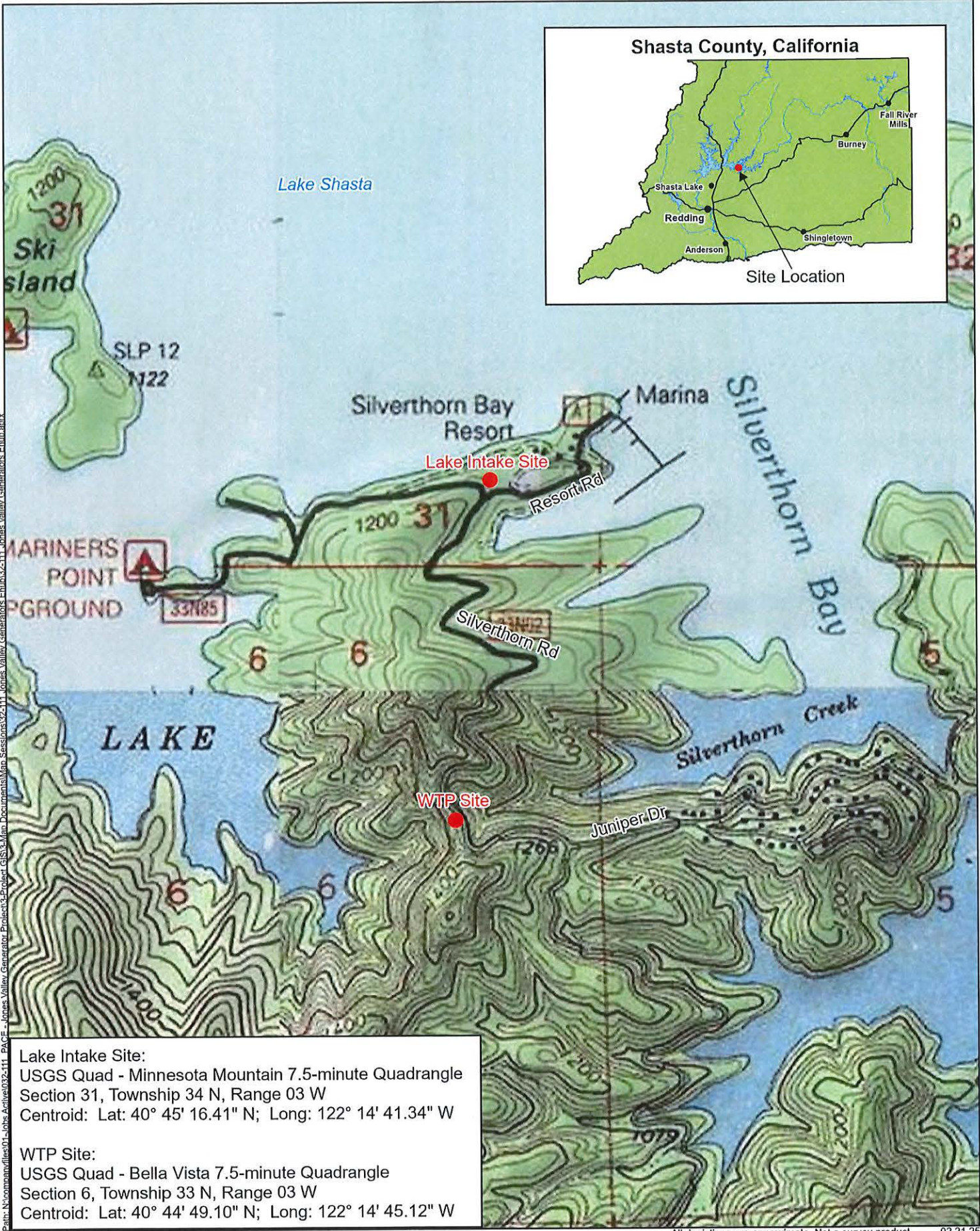


# Notice of Exemption

<b>TO:</b> <b>Office of Planning and Research, State Clearinghouse</b> PO Box 3044 Sacramento, CA 95812-3044  <b>County Clerk, County of Shasta</b> 1643 Market Street Redding, CA 96001	<b>FROM:</b> <b>Shasta County Department of Public Works</b> 1855 Placer Street Redding, CA 96001
<b>Project Title: Jones Valley Water System Emergency Generator Project</b>	
<p><b>Project Location:</b> The project is located within an unincorporated area of Shasta County in the Jones Valley Water System (Shasta County Service Area 6). Improvements would occur in the following two locations, both of which are on U.S. Forest Service land (see <b>Figures 1 and 2</b>).</p> <p><b>Lake Intake Site:</b> The Lake Intake Site is located generally northeast of the intersection of Silverthorn Road and Resort Road, west of Silverthorn Resort and south of Lake Shasta on a portion of Shasta County Assessor's Parcel Number (APN) 026-130-007. Township 34 N, Range 3 W, Section 31 of the U.S. Geological Survey (USGS) Minnesota Mountain 7.5-minute quadrangle.</p> <p><b>Water Treatment Plant (WTP) Site:</b> The WTP is located on the west side of Silverthorn Road, approximately 900 feet northwest of its intersection with Juniper Drive on a portion of Shasta County APN 304-020-002. Township 33N, Range 3W, Section 6. USGS Bella Vista 7.5-minute quadrangle.</p>	
<b>City:</b> Jones Valley (Unincorporated)	<b>County:</b> Shasta
<p><b>Description of Nature, Purpose, and Beneficiaries of Project:</b>          The purpose of the proposed project is to provide an emergency backup power source for critical facilities in the Jones Valley Water System for use during extended PG&amp;E power outages. The project would also eliminate safety risks and minimize the potential for damage to electrical equipment. No earth disturbance or vegetation removal would be required at either location.</p> <p><b>Lake Intake Site:</b>          The County would procure a mobile 150 kW diesel generator for use at the Lake Intake Site. Improvements include installing a new generator receptacle on an existing Manual Transfer Switch (MTS) located on the service entrance switchboard. This would allow personnel to connect the generator without needing to open the electrical equipment.</p> <p><b>WTP Site:</b>          The County would procure a mobile 80 kW diesel generator for use at the WTP Site. There is currently an undersized 100-amp MTS mounted on an existing building, which has a generator receptacle on the underside of the enclosure that is not connected. Improvements include upsizing the MTS from 100 amps to 200 amps and installing a new generator receptacle on the MTS.</p>	
<b>Public Agency Approving and Carrying Out Project:</b> Shasta County	
<b>Agency Contact Person, Phone, and Email:</b>	<b>Venton Trotter, L.S.</b> Deputy County Surveyor/Supervising Engineer 530.245.6811 <a href="mailto:vtrotter@shastacounty.gov">vtrotter@shastacounty.gov</a>
<p><b>Exempt Status: Ministerial Exemption</b>          California Code of Regulations (CCR), Title 14, Division 6, Chapter 3 (CEQA Guidelines), §15268.</p>	
<p><b>Reason Why Project is Exempt:</b></p> <p>CEQA Guidelines §15268 states that ministerial projects are exempt from the requirements of CEQA. As defined in §15268, a ministerial project is one that does not require discretionary approval. A ministerial decision involves only the use of fixed standards or objective measurements and requires little or no personal judgment by a public official as to the wisdom or manner of carrying out the project.</p> <p>The project qualifies for a ministerial exemption because no discretionary approvals by Shasta County are required. The project would comply with applicable sections of the California Building Standards Code.</p>	

Signature:   
**C. Troy Bartolomei**  
 Director of Public Works

Date: 3-14-25



All depictions are approximate. Not a survey product. 02.21.25

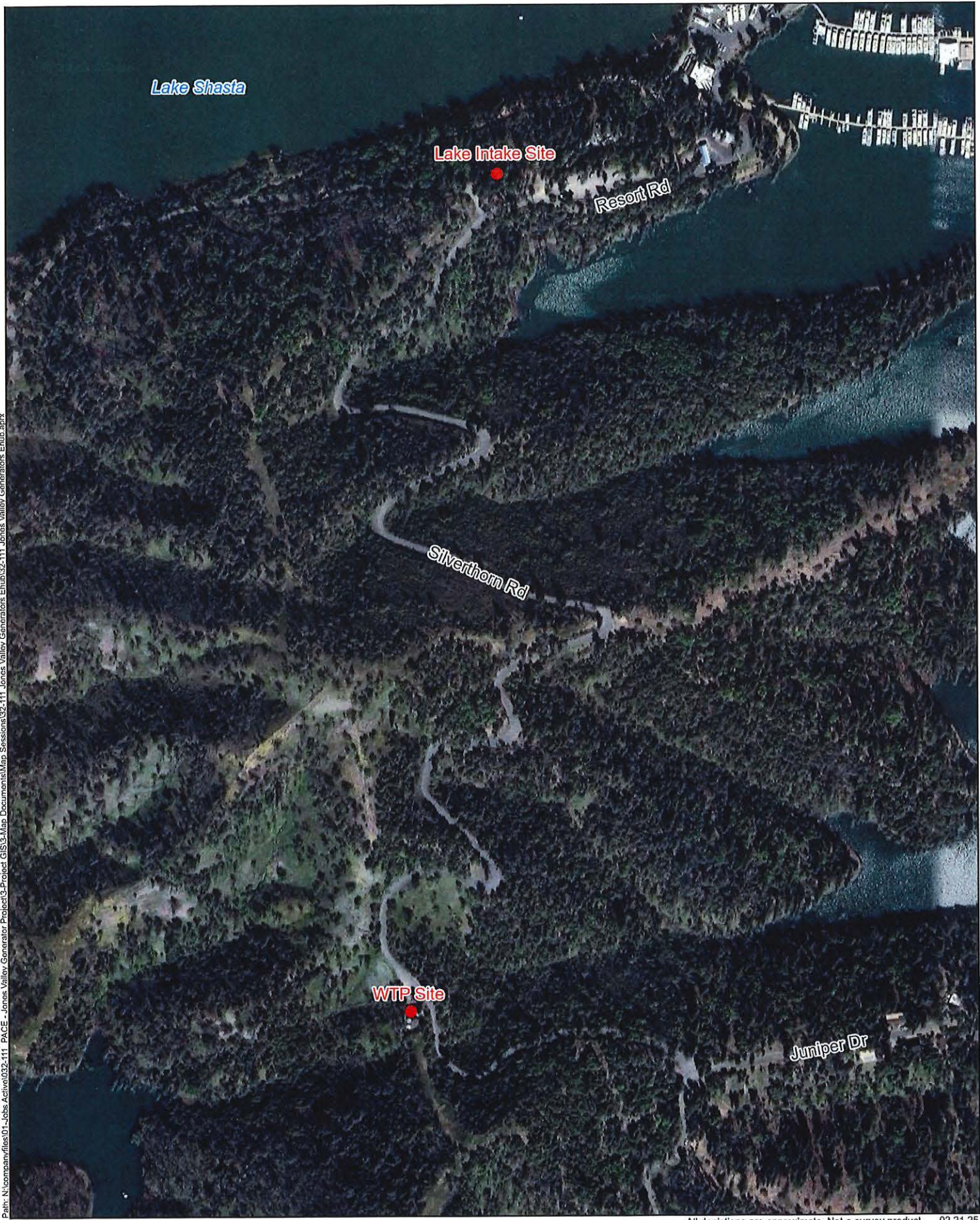
Figure 1



# Project Location and Vicinity



Path: N:\companyfiles\01-Jobs Active\032-111\_PACE - Jones Valley Generator Project\GIS\Map Documents\Map\_Sessions\32-111\_Jones\_Valley\_Generators\_Ehub.aprx



All depictions are approximate. Not a survey product. 02.21.25



Figure 2  
Project Sites