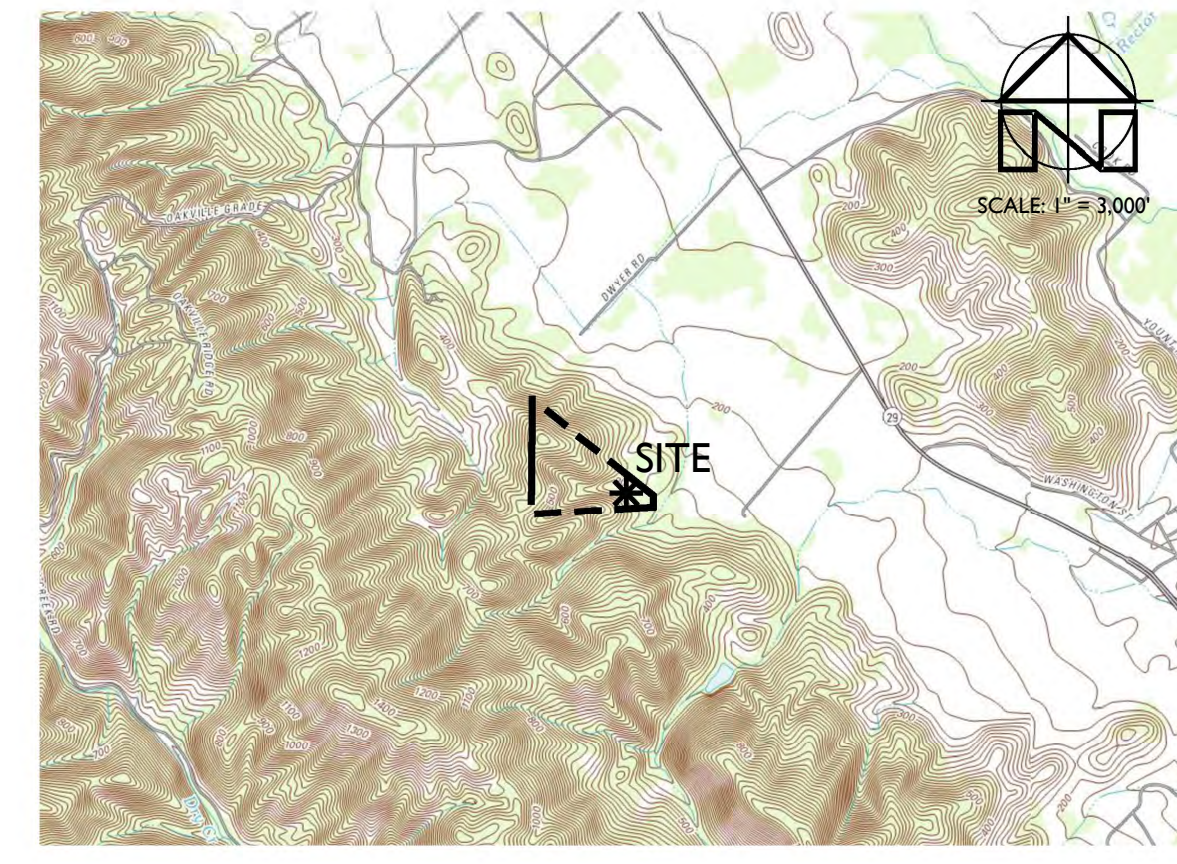
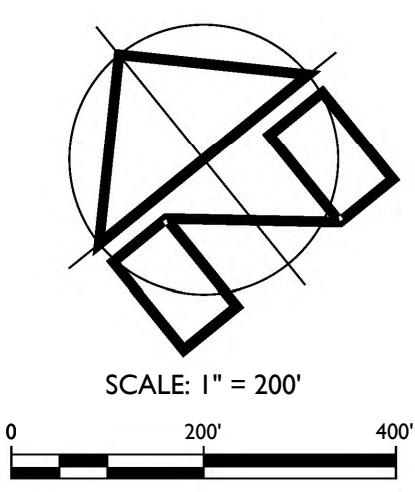
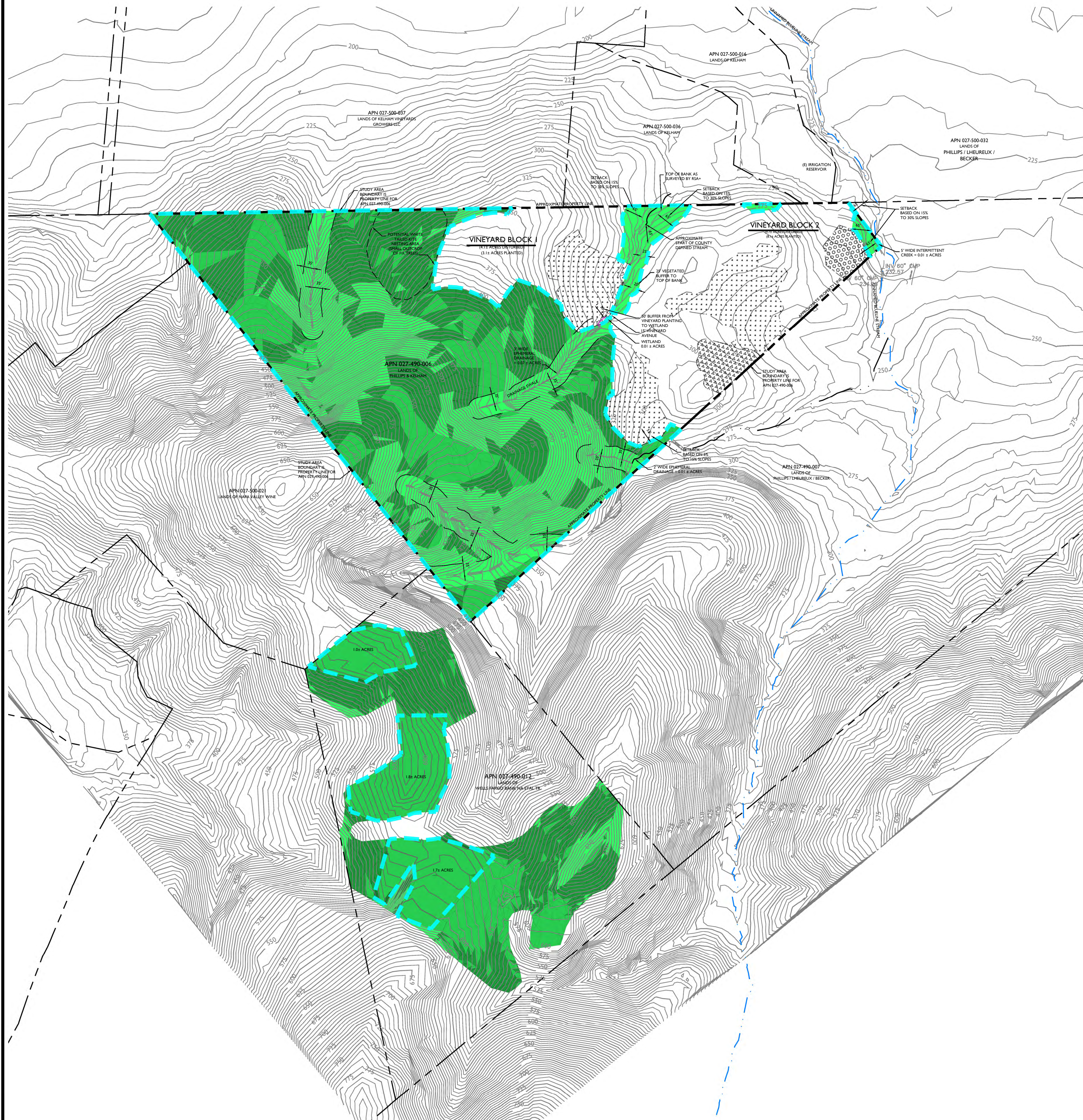


TRUST VINEYARD PARTNERS

OAK WOODLAND PRESERVATION EXHIBIT



LOCATION MAP
SCALE: 1" = 3,000'

PROJECT INFORMATION:

CLIENT:
TRUST VINEYARD PARTNERS
CARE OF:
BRUCE PHILLIPS & BILL KELHAM
POST OFFICE BOX 2066
YOUNTVILLE, CA 94599

SURVEY NOTES:

1. FADED BACKGROUND REPRESENTS EXISTING TOPOGRAPHIC FEATURES. TOPOGRAPHIC INFORMATION WAS TAKEN FROM THE NAPA COUNTY GEOGRAPHIC INFORMATION SYSTEM DATABASE. APPLIED CIVIL ENGINEERING INCORPORATED ASSUMES NO LIABILITY REGARDING THE ACCURACY OR COMPLETENESS OF THE TOPOGRAPHIC INFORMATION.
2. AERIAL PHOTOGRAPHS WERE OBTAINED FROM THE SAN FRANCISCO ESTUARY INSTITUTE (SFEI) SAN FRANCISCO BAY AREA ORTHOPHOTOS DATABASE, DATED JUNE 2014 AND MAY NOT REPRESENT CURRENT CONDITIONS.
3. CONTOUR INTERVAL: FIVE (5) FEET, HIGHLIGHTED EVERY TWENTY FIVE (25) FEET.
4. BENCHMARK: NAVD 88
5. THE PROPERTY LINES SHOWN ON THESE PLANS DO NOT REPRESENT A BOUNDARY SURVEY. THEY ARE VERY APPROXIMATE AND ARE PROVIDED FOR INFORMATIONAL PURPOSES ONLY.

LEGEND:

	APPROXIMATE PROPERTY LINE
	BLUELINE STREAM
	COUNTY DEFINED STREAM
	NEW VINEYARD AVENUE
	NEW VINEYARD BLOCK
	POTENTIAL WETLAND AREA = 0.01 ± ACRES
	PORTION OF COAST LIVE OAK WOODLAND LEFT UNHATCHED FOR CLARITY
	COAST LIVE OAK WOODLAND ON APN 027-490-006 AND WITHIN PROJECT AREA
	9.4 ± ACRES WITHIN VINEYARD BLOCKS LEFT UNHATCHED FOR CLARITY. ASSUME COAST LIVE OAK WOODLAND FOR ALL AREAS NOT HATCHED WITHIN THE SUBJECT PARCEL (APN 027-490-006).
	COAST LIVE OAK WOODLAND OUTSIDE OF PROJECT AREA
	28.6 ± ACRES ON APN 027-490-006 AND 12.8 ± ACRES ON APN 027-490-012
	COAST LIVE OAK WOODLAND OUTSIDE OF PROJECT AREA, OUTSIDE OF STREAM SETBACKS AND 0% - 30% SLOPES
	4.9 ± ACRES ON APN 027-490-006 AND 4.5 ± ACRES ON APN 027-490-012
	COAST LIVE OAK WOODLAND OUTSIDE OF PROJECT AREA, OUTSIDE OF STREAM SETBACKS AND 30% - 50% SLOPES
	10.6 ± ACRES ON APN 027-490-006 AND 5.6 ± ACRES ON APN 027-490-012
	COAST LIVE OAK WOODLAND OUTSIDE OF PROJECT AREA, WITHIN STREAM SETBACKS AND / OR ON SLOPES OVER 50%
	NON NATIVE GRASSLAND (4.0 ± ACRES)
	CHAMISE CHAPARRAL (0.5 ± ACRES)
	EXISTING DEVELOPMENT AREA (0.4 ± ACRES)
	PROPOSED OAK WOODLAND PRESERVATION AREA
	28.6 ± ACRES ON APN 027-490-006
	4.5 ± ACRES ON APN 027-490-012
	33.1 ± ACRES TOTAL
	9.4 ACRES OUT OF 33.1 ACRES ON < 30% SLOPES AND OUT OF SETBACKS

	AREA REMOVED BY VEGETATION TYPE				
	NON NATIVE GRASSLAND	CHAMISE CHAPARRAL	COAST LIVE OAK WOODLAND	EXISTING DEVELOPMENT	TOTAL
VINEYARD BLOCK 1	1.1	0.0	3.0	0.0	4.1
VINEYARD BLOCK 2	2.4	0.5	6.4	0.4	9.7
TOTAL REMOVED	3.5	0.5	9.4	0.4	13.8
*TOTAL ON APN 027-490-006	4.0	0.5	38.0	0.4	42.9
% RETAINED	13%	0%	75%	0%	

* THE VEGETATION COVER FOR THE DRAINAGE AND WETLAND AREAS ARE INCLUDED IN THE OVERALL ACREAGE FOR THE VEGETATION TYPE.

OAK WOODLAND PRESERVATION EXHIBIT
SCALE: 1" = 200'

PREPARED UNDER THE DIRECTION OF:



DRAWN BY: BT DRAFTING
CHECKED BY: MRM
DATE: FEBRUARY 6, 2025
REVISIONS: BY:

JOB NUMBER: 18-110
FILE: 18-110ECP-VDP-2.DWG
ORIGINAL SIZE: 24" X 36"
SHEET NUMBER: