

**Eastern Municipal Water District**

2270 Trumble Road  
P.O. Box 8300  
Perris, CA 92572-8300



**Notice of Exemption**

**To:** Riverside County Clerk  
2724 Gateway Drive  
Riverside, CA 92507

**Project Title:** Perris II Desalter Safety Platforms Project  
**Project Location:** 29541 Murrieta Rd  
**City:** Menifee  
**County:** Riverside

**Description of Nature, Purpose, and Beneficiaries of Project:**

Eastern Municipal Water District (EMWD) began operation of its third facility at the Desalination Complex, the Perris II Desalination Facility, in 2021. The purpose of this facility was to expand the use of local groundwater, help meet EMWD’s service area’s increasing demands, and enhance the salinity management of the Perris South and Lakeview groundwater sub-basins.

A recent safety assessment of the Perris II Desalination Facility identified safety hazards associated with the maintenance of the flow meter equipment located on top of the reverse osmosis skids, which require routine service and calibration. Temporary platforms and safety equipment are currently used but are costly and ineffective. The scope of the project includes the construction of permanent platforms for each of the three trains, which include a potable stairway, self-closing gate, and permanent guardrail around the platform perimeter. This will provide permanent safe access to the equipment for maintenance. Beneficiaries of the project are EMWD Maintenance Staff and EMWD ratepayers.

**Public Agency Approving and Carrying Out Project:** Eastern Municipal Water District

**Exempt Status:**

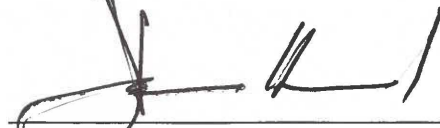
Categorical Exemption. 15301(f)

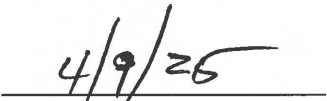
**Reasons why project is exempt:**

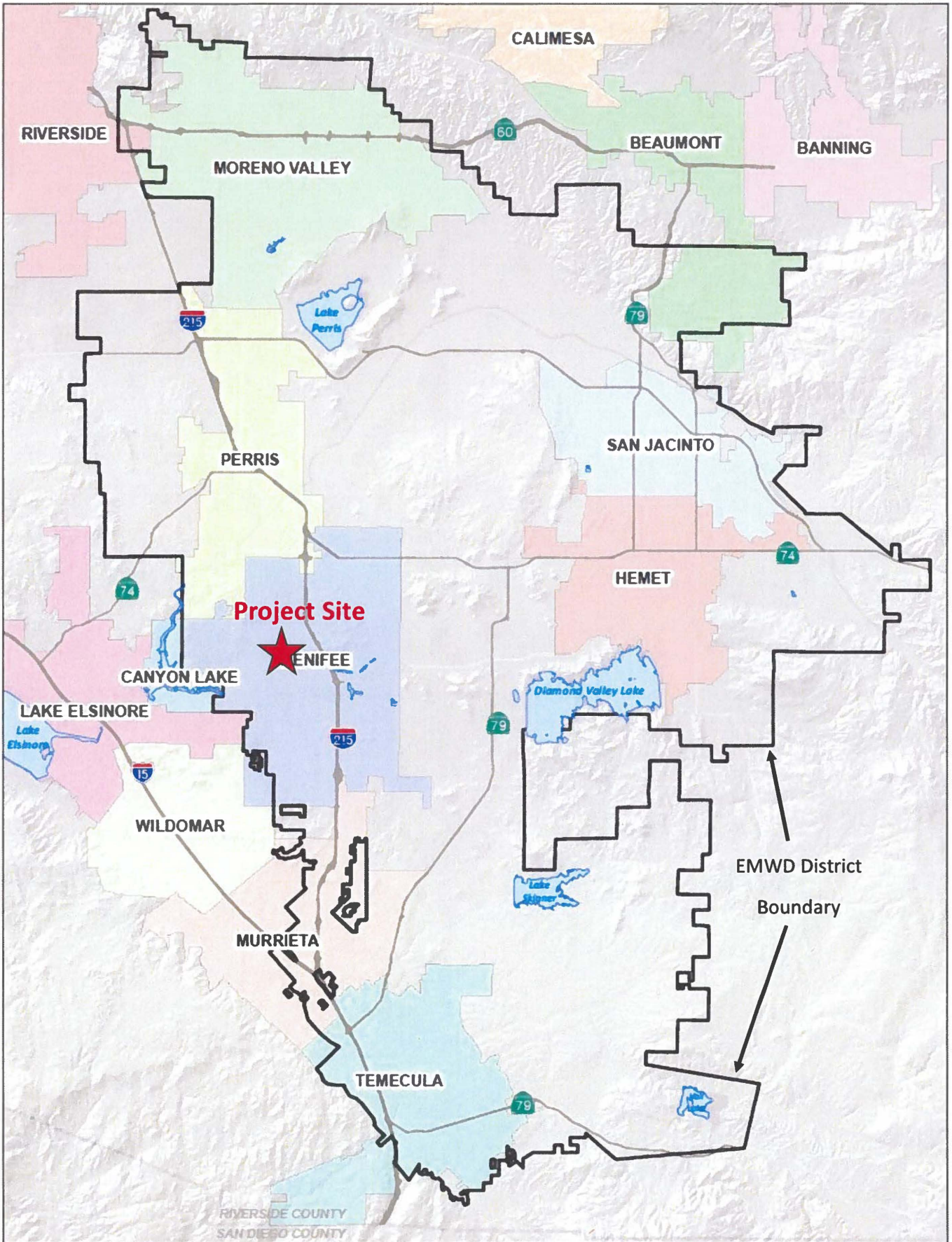
This class of exemption covers the addition of safety or health protection devices for use in conjunction with existing structures, facilities, or mechanical equipment with negligible or no expansion of the facility’s existing use. The project will construct permanent platforms and provide a ladder system to safely access equipment for routine maintenance, which will maintain the facility’s capacity.

**EMWD Contact:** Joe Broadhead

**Phone:** (951) 928-3777, ext 4545

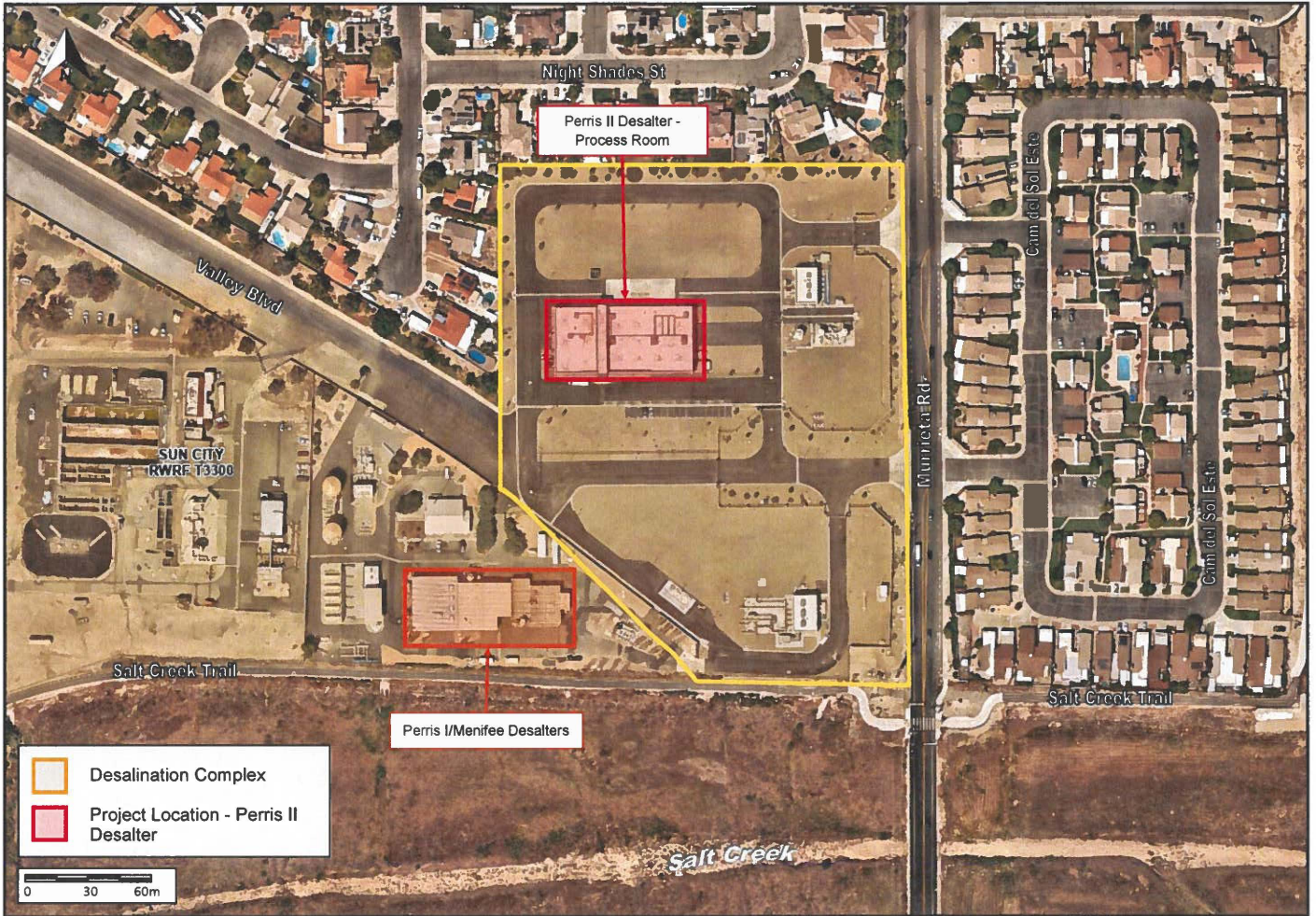
  
\_\_\_\_\_  
Joe Broadhead  
Principal Water Resources Specialist

  
\_\_\_\_\_  
Date



Perris II Desalter Safety Platforms Project

EXHIBIT 1: REGIONAL LOCATION MAP



Perris II Desalter Safety Platforms Project

EXHIBIT 2: SITE LOCATION MAP