

Eastern Municipal Water District

2270 Trumble Road
P.O. Box 8300
Perris, CA 92572-8300



Notice of Exemption

To: Riverside County Clerk
2724 Gateway Drive
Riverside, CA 92507

Project Title: Simpson and Patterson Booster Pumping Station Interim Improvements
Project Location: 28441 Patterson Avenue
City: Unincorporated community of Winchester
County: Riverside

Description of Nature, Purpose, and Beneficiaries of Project:

Eastern Municipal Water District (EMWD) first designed and constructed the Simpson and Patterson Booster Pumping Station (BPS) in 1996 with a design capacity of 42 MGD. The location of the BPS is ideal to provide potable water services to the Conestoga Development and support future development in the nearby community. The age of the BPS facility, changes to the hydraulic conditions since its original design, and concurrent projects that demand intensive hydraulic performance from the BPS require that modifications be made to the facility before it can be used to meet the water supply demands of growing development.

The proposed project includes installing two packaged booster pump stations in parallel to meet desired pumping capacity, removal and re-installation of a block wall around the property perimeter, select removal of bushes/trees, minor grading/paving, and installation of permanent emergency stand-by generator with an automatic transfer switch. Beneficiaries of the project are EMWD ratepayers, particularly those residing in the Conestoga Development and development projects in the nearby community.

Public Agency Approving and Carrying Out Project: Eastern Municipal Water District

Exempt Status:

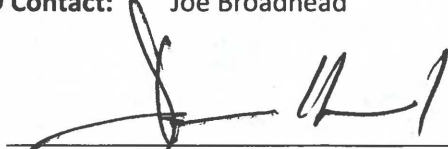
Categorical Exemption. Section 15301

Reasons why project is exempt:

This class provides exemption for minor alteration of existing public facilities, equipment involving negligible or no expansion of existing use. This exemption applies to existing facilities of publicly owned utilities. The proposed Simpson and Patterson Booster Pumping Plant Interim Improvements would be conducted on a developed site involving no expansion of service.

EMWD Contact: Joe Broadhead

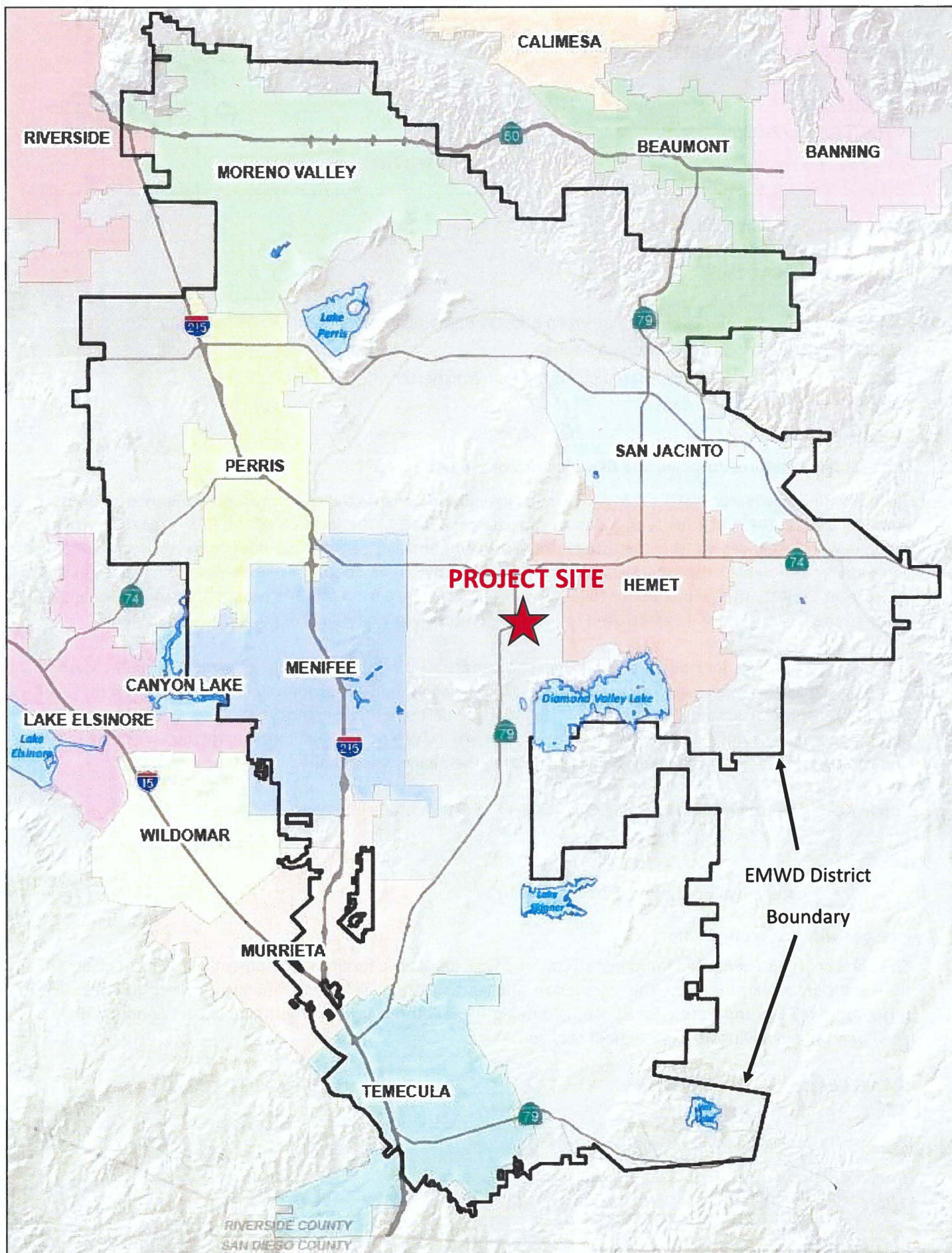
Phone: (951) 928-3777, ext 4545

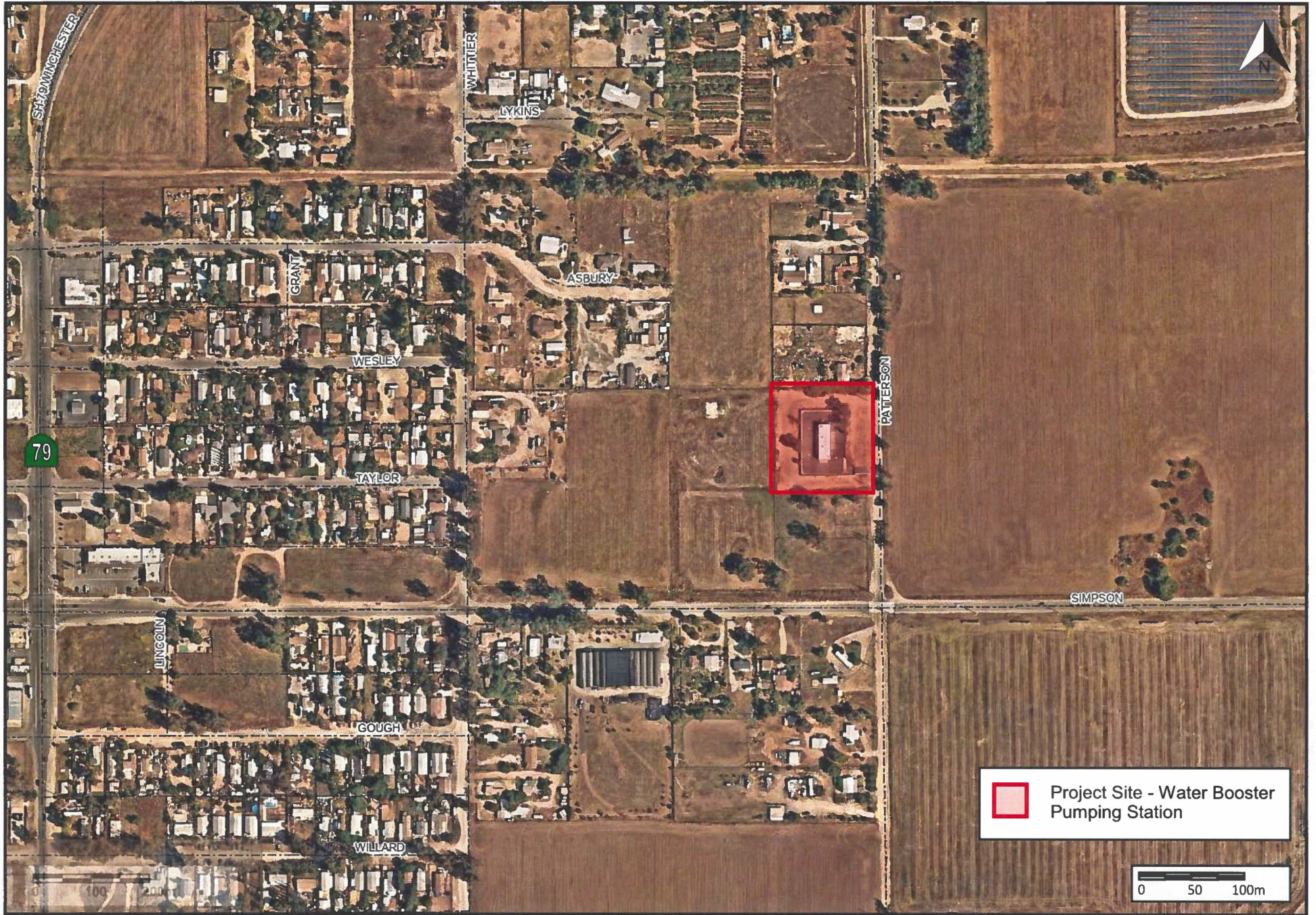


Joe Broadhead
Principal Water Resources Specialist

4-9-25

Date





Simpson and Patterson BPS Interim Improvements

EXHIBIT 2: SITE LOCATION MAP