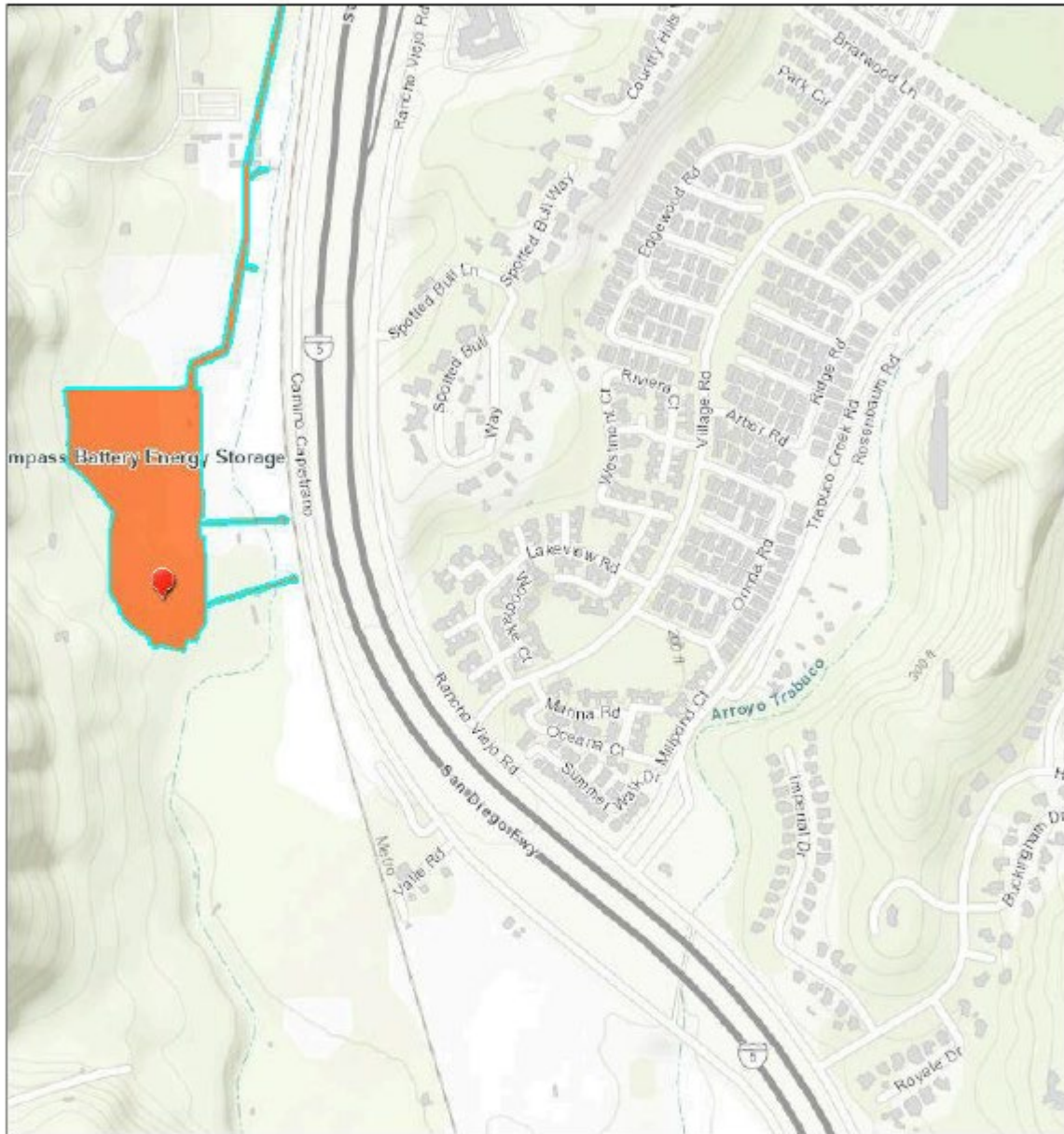


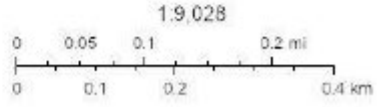
Screening Report

Area of Interest (AOI) Information

Area: 12.56 mi²



 Siting Project Sites



City of Laguna Niguel, County of Los Angeles, County of Riverside, Bureau of Land Management, Esri, HERE, Garmin, INCREMENT P, Intermap, iSDRS, METNASC, EPA, USDA

Summary

Name	Count	Area (mi ²)	Length (mi)
Highways (CalTrans)	4	N/A	11.72
Airport Boundaries (CalTrans)	0	0	N/A
Railroads	1	N/A	3.97
Waterways	31	N/A	11.48
Public Schools	8	N/A	N/A
Private Schools	8	N/A	N/A
Colleges and Universities	2	N/A	N/A
Child Care Centers	23	N/A	N/A

Highways (CalTrans)

#	Route	Route Type	Length (mi)
1	73	State	3.82
2	5	Interstate	7.90

Railroads

#	FRA_ID	FRA_REGION	SUBDIVISION	RR_OWNER	TRACKS
1	213,077	7	SAN DIEGO	SCAX	2

#	NET_DESC	PASSENGER	Length (mi)
1	Main sub network	Amtrak	3.97

Waterways

#	Name	Waterway	Length (mi)
1	Trabuco Creek	River	0.42
2	Horno Creek	Drain	0.62
3	Oso Creek Channel	Stream	1.33
4	Horno Creek	Stream	1.68
5	<i>No Data</i>	Stream	1.80
6	Oso Creek Channel	Drain	1.81
7	Trabuco Creek	Stream	3.82

Public Schools

#	NAME	ADDRESS	CITY	STATE	ZIP
1	ORANGE COUNTY ACADEMY OF SCIENCES AND ARTS	29292 CROWN VALLEY PKWY.	LAGUNA NIGUEL	CA	92677
2	COMMUNITY ROOTS ACADEMY	29292 CROWN VALLEY PKWY.	LAGUNA NIGUEL	CA	92677
3	CAPISTRANO VALLEY HIGH	26301 VIA ESCOLAR	MISSION VIEJO	CA	92692
4	NIGUEL HILLS MIDDLE	29070 SHARK BAY	LAGUNA NIGUEL	CA	92677
5	CAPISTRANO UNION HIGH	31422 CAMINO CAPISTRANO	SAN JUAN CAPISTRANO	CA	92675
6	HIDDEN HILLS ELEMENTARY	25142 HIDDEN HILLS RD.	LAGUNA NIGUEL	CA	92677
7	MARIAN BERGESON ELEMENTARY	25302 RANCHO NIGUEL RD.	LAGUNA NIGUEL	CA	92677
8	GEORGE WHITE ELEMENTARY	25422 CHAPPAROSA PARK DR.	LAGUNA NIGUEL	CA	92677

#	TELEPHONE	POPULATION	COUNTY	WEBSITE	ENROLLMENT
1	(949) 269-3291	258	ORANGE	http://www.ocasa.org	249
2	(949) 831-4272	823	ORANGE	http://www.learningcommunities.org	783
3	(949) 364-6100	2,120	ORANGE	http://capovalley.capousd.org/	2,029
4	(949) 234-5360	758	ORANGE	http://niguelhills.capousd.org/	721
5	(949) 489-7216	162	ORANGE	http://union.capousd.org/	150
6	(949) 495-0050	340	ORANGE	http://hiddenhills.capousd.org/	327

7	(949) 643-1540	527	ORANGE	http://bergeson.capousd.org/	506
8	(949) 249-3875	412	ORANGE	http://georgewhite.capousd.org/	396

#	ST_GRADE	END_GRADE	FT_TEACHER	Count
1	KG	05		1
2	KG	08		1
3	09	12		1
4	06	08		1
5	09	12		1
6	KG	05		1
7	KG	05		1
8	KG	05		1

Private Schools

#	NAME	ADDRESS	CITY	STATE	ZIP
1	JSERRA CATHOLIC HIGH SCHOOL	26351 JUNIPERO SERRA RD	SAN JUAN CAPISTRANO	CA	92675
2	MARBELLA MONTESSORI	31113 RANCHO VIEJO RD	SAN JUAN CAPISTRANO	CA	92675
3	STONEBROOKE CHRISTIAN SCHOOL	26300 VIA ESCOLAR	SAN JUAN CAPISTRANO	CA	92692
4	SUNFLOWER MONTESSORI	28251 MARGUERITE PKWY STE L	MISSION VIEJO	CA	92692
5	FAIRMONT SAN JUAN CAPISTRANO	26333 OSO RD	SAN JUAN CAPISTRANO	CA	92675
6	MCDOWELL SCHOOL	29028 ALOMA AVE	LAGUNA NIGUEL	CA	92677
7	FAIRMONT PRIVATE SCHOOL	26333 OSO RD	SAN JUAN CAPISTRANO	CA	92675
8	MISSION LUTHERAN SCHOOL	24360 YOSEMITE RD	LAGUNA NIGUEL	CA	92677

#	TELEPHONE	POPULATION	COUNTY	WEBSITE	LEVEL
---	-----------	------------	--------	---------	-------

1	(949) 493-9307	1,369	ORANGE	NOT AVAILABLE	2
2	(949) 661-3355	17	ORANGE	NOT AVAILABLE	1
3	(949) 364-4407	483	ORANGE	NOT AVAILABLE	1
4	(949) 364-6500	14	ORANGE	NOT AVAILABLE	1
5	(949) 443-4050	400	ORANGE	NOT AVAILABLE	3
6	(949) 495-5162	103	ORANGE	NOT AVAILABLE	1
7	(949) 443-4050	382	ORANGE	NOT AVAILABLE	3
8	(949) 643-8311	40	ORANGE	NOT AVAILABLE	1

#	ENROLLMENT	START_GRAD	END_GRADE	FT_TEACHER	COUNT
1	1,291		17		☐
2	15		3		☐
3	461		13		☐
4	12		6		☐
5	360		17		☐
6	78		10		☐
7	338		17		☐
8	37		4		☐

Colleges and Universities

#	NAME	ADDRESS	CITY	STATE	ZIP
1	SOUTH ORANGE COUNTY COMMUNITY COLLEGE DISTRICT	28000 MARGUERITE PKY	MISSION VIEJO	CA	92692
2	SADDLEBACK COLLEGE	28000 MARGUERITE PKY	MISSION VIEJO	CA	92692

#	TELEPHONE	POPULATION	COUNTY	WEBSITE	LEVEL
1	(949) 582-4999	107	ORANGE	www.socccd.edu/	3

2	(949) 582-4500	20,211	ORANGE	www.saddleback.edu/	1
---	----------------	--------	--------	---------------------	---

#	PT_ENROLL	FT_ENROLL	TOT_ENROLL	HOUSING	DORM_C AP	TOT_EMP	Count
1	-999	-999	-999	-2	-999	107	1
2	13,363	5,621	18,984	2	-999	1,227	1

Child Care Centers

#	NAME	ADDRESS	CITY	COUNTRY	COUNTY
1	CHILDTIME CHILDREN'S CENTER INC.	24590 LA PLATA DR.	LAGUNA NIGUEL	USA	ORANGE
2	GODDARD SCHOOL, THE	1 AURA LANE	LADERA RANCH	USA	ORANGE
3	MARINA VIEW PRESCHOOL	25301 SWEET MEADOW DRIVE	LAGUNA NIGUEL	USA	ORANGE
4	MCDOWELL SCHOOL	29028 ALOMA AVE	LAGUNA NIGUEL	USA	ORANGE
5	SOUTH COAST YMCA - MARION BERGESON ELEMENTARY	25302 RANCHO NIGUEL	LAGUNA NIGUEL	USA	ORANGE
6	SOUTH COAST YMCA - GEORGE WHITE ELEMENTARY SCHOOL	25422 CHAPPAROSA PARK DR.	LAGUNA NIGUEL	USA	ORANGE
7	SOUTH COAST YMCA - HIDDEN HILLS	25142 HIDDEN HILLS ROAD	LAGUNA NIGUEL	USA	ORANGE
8	LIFE TIME ATHLETIC - LAGUNA	25600 RANCHO NIGUEL ROAD	LAGUNA NIGUEL	USA	ORANGE
9	COMMUNITY CARE CLUB AT COMMUNITY ROOTS ACADEMY	29292 CROWN VALLEY PKWY	LAGUNA NIGUEL	USA	ORANGE

10	MISSION LUTHERAN PRESCHOOL	24360 YOSEMITE ROAD	LAGUNA NIGUEL	USA	ORANGE
11	SADDLEBACK COLLEGE CHILDREN'S CENTER	28000 MARGUERITE PARKWAY	MISSION VIEJO	USA	ORANGE
12	CHILDTIME CHILDREN'S CENTER INC.	24590 LA PLATA DR.	LAGUNA NIGUEL	USA	ORANGE
13	SUNFLOWER MONTESSORI	28251 MARGUERITE PARKWAY	MISSION VIEJO	USA	ORANGE
14	CAPO VALLEY HEAD START	31485 EL CAMINO REAL	SAN JUAN CAPISTRANO	USA	ORANGE
15	HIDDEN HILLS ELEMENTARY	25142 HIDDEN HILLS ROAD	LAGUNA NIGUEL	USA	ORANGE
16	GODDARD SCHOOL, THE	1 AURA LANE	LADERA RANCH	USA	ORANGE
17	MARBELLA MONTESSORI	31113 RANCHO VIEJO ROAD	SAN JUAN CAPISTRANO	USA	ORANGE
18	STONEBROOKE CHRISTIAN PRE - SCHOOL	26300 VIA ESCOLAR	SAN JUAN CAPISTRANO	USA	ORANGE
19	MCDOWELL SCHOOL	29028 ALOMA AVENUE	LAGUNA NIGUEL	USA	ORANGE
20	MARIAN BERGESON ELEMENTARY	25302 RANCHO NIGUEL ROAD	LAGUNA NIGUEL	USA	ORANGE
21	MARINA VIEW PRESCHOOL	25301 SWEET MEADOW DRIVE	LAGUNA NIGUEL	USA	ORANGE
22	GEORGE WHITE ELEMENTARY	25422 CHAPPAROSA PARK DRIVE	LAGUNA NIGUEL	USA	ORANGE
23	FAIRMONT SCHOOLS SAN JUAN CAPISTRANO	26333 OSO ROAD	SAN JUAN CAPISTRANO	USA	ORANGE

#	COUNTYFIPS	ID	LATITUDE	LONGITUDE	NAICS_CODE
1	06059	1222323994	33.53	-117.70	624410
2	06059	1222327892	33.55	-117.65	624410

3	06059	1222328032	33.52	-117.68	624410
4	06059	1222260190	33.54	-117.69	624410
5	06059	1222270901	33.55	-117.69	624410
6	06059	1222270910	33.52	-117.69	624410
7	06059	1222270904	33.53	-117.69	624410
8	06059	1222256943	33.56	-117.68	624410
9	06059	1222241854	33.54	-117.70	624410
10	06059	1222260919	33.55	-117.70	624410
11	06059	1222268702	33.56	-117.66	624410
12	06059	1222330899	33.53	-117.70	624410
13	06059	1222272819	33.55	-117.67	624410
14	06059	1222238620	33.51	-117.66	624410
15	06059	1222250440	33.53	-117.69	624410
16	06059	1222331471	33.55	-117.65	624410
17	06059	1222259727	33.51	-117.66	624410
18	06059	1222272589	33.54	-117.67	624410
19	06059	1222331759	33.54	-117.69	624410
20	06059	1222259768	33.55	-117.69	624410
21	06059	1222331828	33.52	-117.68	624410
22	06059	1222322714	33.52	-117.69	624410
23	06059	1222268703	33.52	-117.67	624410

#	NAICS_D ESC	POPULATI ON	SOURCE	SOURCED ATE	ST_SUBT YPE
1	CHILD DAY CARE CENTERS	32	https://data.chhs.ca.gov/dataset/bc819981-be52-4011-b3e5-b3fd09d4ea87/resource/cdf6928f-7cbe-49e8-b415-5422b357cfd3/download/ccl_locations_cc.csv	May 16, 2022	INFANT CENTER
2	CHILD DAY CARE CENTERS	24	https://data.chhs.ca.gov/dataset/bc819981-be52-4011-b3e5-b3fd09d4ea87/resource/cdf6928f-7cbe-49e8-b415-5422b357cfd3/download/ccl_locations_cc.csv	May 16, 2022	INFANT CENTER
3	CHILD DAY CARE CENTERS	10	https://data.chhs.ca.gov/dataset/bc819981-be52-4011-b3e5-b3fd09d4ea87/resource/cdf6928f-7cbe-49e8-b415-5422b357cfd3/download/ccl_locations_cc.csv	May 16, 2022	INFANT CENTER

4	CHILD DAY CARE, BEFORE OR AFTER SCHOOL, SEPARATE FROM SCHOOLS	16	https://data.chhs.ca.gov/dataset/bc819981-be52-4011-b3e5-b3fd09d4ea87/resource/cdf6928f-7cbe-49e8-b415-5422b357cf3/download/ccl_locations_cc.csv	May 16, 2022	INFANT CENTER
5	CHILD DAY CARE, BEFORE OR AFTER SCHOOL, SEPARATE FROM SCHOOLS	180	https://data.chhs.ca.gov/dataset/bc819981-be52-4011-b3e5-b3fd09d4ea87/resource/cdf6928f-7cbe-49e8-b415-5422b357cf3/download/ccl_locations_cc.csv	May 16, 2022	SCHOOL-AGE DAY CARE CENTER
6	CHILD DAY CARE, BEFORE OR AFTER SCHOOL, SEPARATE FROM SCHOOLS	90	https://data.chhs.ca.gov/dataset/bc819981-be52-4011-b3e5-b3fd09d4ea87/resource/cdf6928f-7cbe-49e8-b415-5422b357cf3/download/ccl_locations_cc.csv	May 16, 2022	SCHOOL-AGE DAY CARE CENTER
7	CHILD DAY CARE, BEFORE OR AFTER SCHOOL, SEPARATE FROM SCHOOLS	90	https://data.chhs.ca.gov/dataset/bc819981-be52-4011-b3e5-b3fd09d4ea87/resource/cdf6928f-7cbe-49e8-b415-5422b357cf3/download/ccl_locations_cc.csv	May 16, 2022	SCHOOL-AGE DAY CARE CENTER
8	CHILD DAY CARE CENTERS	100	https://data.chhs.ca.gov/dataset/bc819981-be52-4011-b3e5-b3fd09d4ea87/resource/cdf6928f-7cbe-49e8-b415-5422b357cf3/download/ccl_locations_cc.csv	May 16, 2022	SCHOOL-AGE DAY CARE CENTER

			5422b357cfd3/download/ccl_locations_cc.csv		
9	CHILD DAY CARE, BEFORE OR AFTER SCHOOL, SEPARATE FROM SCHOOLS	120	https://data.chhs.ca.gov/dataset/bc819981-be52-4011-b3e5-b3fd09d4ea87/resource/cdf6928f-7cbe-49e8-b415-5422b357cfd3/download/ccl_locations_cc.csv	May 16, 2022	SCHOOL-AGE DAY CARE CENTER
10	CHILD DAY CARE CENTERS	95	https://data.chhs.ca.gov/dataset/bc819981-be52-4011-b3e5-b3fd09d4ea87/resource/cdf6928f-7cbe-49e8-b415-5422b357cfd3/download/ccl_locations_cc.csv	May 16, 2022	DAY CARE CENTER
11	CHILD DAY CARE CENTERS	100	https://data.chhs.ca.gov/dataset/bc819981-be52-4011-b3e5-b3fd09d4ea87/resource/cdf6928f-7cbe-49e8-b415-5422b357cfd3/download/ccl_locations_cc.csv	May 16, 2022	DAY CARE CENTER
12	CHILD DAY CARE CENTERS	72	https://data.chhs.ca.gov/dataset/bc819981-be52-4011-b3e5-b3fd09d4ea87/resource/cdf6928f-7cbe-49e8-b415-5422b357cfd3/download/ccl_locations_cc.csv	May 16, 2022	DAY CARE CENTER
13	CHILD DAY CARE CENTERS	47	https://data.chhs.ca.gov/dataset/bc819981-be52-4011-b3e5-b3fd09d4ea87/resource/cdf6928f-7cbe-49e8-b415-5422b357cfd3/download/ccl_locations_cc.csv	May 16, 2022	DAY CARE CENTER
14	HEAD START PROGRAMS, SEPARATE FROM	60	https://data.chhs.ca.gov/dataset/bc819981-be52-4011-b3e5-b3fd09d4ea87/resource/cdf6928f-7cbe-49e8-b415-5422b357cfd3/download/ccl_locations_cc.csv	May 16, 2022	DAY CARE CENTER

	SCHOOLS				
15	CHILD DAY CARE, BEFORE OR AFTER SCHOOL, SEPARATE FROM SCHOOLS	48	https://data.chhs.ca.gov/dataset/bc819981-be52-4011-b3e5-b3fd09d4ea87/resource/cdf6928f-7cbe-49e8-b415-5422b357cfd3/download/ccl_locations_cc.csv	May 16, 2022	DAY CARE CENTER
16	CHILD DAY CARE CENTERS	158	https://data.chhs.ca.gov/dataset/bc819981-be52-4011-b3e5-b3fd09d4ea87/resource/cdf6928f-7cbe-49e8-b415-5422b357cfd3/download/ccl_locations_cc.csv	May 16, 2022	DAY CARE CENTER
17	CHILD DAY CARE CENTERS	124	https://data.chhs.ca.gov/dataset/bc819981-be52-4011-b3e5-b3fd09d4ea87/resource/cdf6928f-7cbe-49e8-b415-5422b357cfd3/download/ccl_locations_cc.csv	May 16, 2022	DAY CARE CENTER
18	CHILD DAY CARE CENTERS	75	https://data.chhs.ca.gov/dataset/bc819981-be52-4011-b3e5-b3fd09d4ea87/resource/cdf6928f-7cbe-49e8-b415-5422b357cfd3/download/ccl_locations_cc.csv	May 16, 2022	DAY CARE CENTER
19	CHILD DAY CARE CENTERS	36	https://data.chhs.ca.gov/dataset/bc819981-be52-4011-b3e5-b3fd09d4ea87/resource/cdf6928f-7cbe-49e8-b415-5422b357cfd3/download/ccl_locations_cc.csv	May 16, 2022	DAY CARE CENTER
20	CHILD DAY CARE, BEFORE OR AFTER SCHOOL, SEPARATE	24	https://data.chhs.ca.gov/dataset/bc819981-be52-4011-b3e5-b3fd09d4ea87/resource/cdf6928f-7cbe-49e8-b415-5422b357cfd3/download/ccl_locations_cc.csv	May 16, 2022	DAY CARE CENTER

	E FROM SCHOOLS				
21	CHILD DAY CARE CENTERS	118	https://data.chhs.ca.gov/dataset/bc819981-be52-4011-b3e5-b3fd09d4ea87/resource/cdf6928f-7cbe-49e8-b415-5422b357cfd3/download/ccl_locations_cc.csv	May 16, 2022	DAY CARE CENTER
22	CHILD DAY CARE, BEFORE OR AFTER SCHOOL, SEPARATE FROM SCHOOLS	24	https://data.chhs.ca.gov/dataset/bc819981-be52-4011-b3e5-b3fd09d4ea87/resource/cdf6928f-7cbe-49e8-b415-5422b357cfd3/download/ccl_locations_cc.csv	May 16, 2022	DAY CARE CENTER
23	CHILD DAY CARE CENTERS	132	https://data.chhs.ca.gov/dataset/bc819981-be52-4011-b3e5-b3fd09d4ea87/resource/cdf6928f-7cbe-49e8-b415-5422b357cfd3/download/ccl_locations_cc.csv	May 16, 2022	DAY CARE CENTER

#	STATE	STATUS	TELEPHONE	TYPE	VAL_DATE
1	CA	OPEN	(949) 495-4727	CENTER BASED	September 13, 2020
2	CA	OPEN	(949) 218-6200	CENTER BASED	September 30, 2020
3	CA	OPEN	(949) 249-8687	CENTER BASED	October 4, 2020
4	CA	OPEN	(949) 495-5162	CENTER BASED	March 18, 2019
5	CA	OPEN	(949) 643-0721	SCHOOL BASED	April 17, 2019
6	CA	OPEN	(949) 495-4619	SCHOOL BASED	May 19, 2020
7	CA	OPEN	(949) 249-6110	CENTER BASED	May 13, 2020
8	CA	OPEN	(949) 238-2700	CENTER BASED	April 17, 2019

9	CA	OPEN	(949) 831-4272	CENTER BASED	January 13, 2020
10	CA	OPEN	(949) 643-8311	CENTER BASED	January 6, 2020
11	CA	OPEN	(949) 582-4582	CENTER BASED	January 6, 2020
12	CA	OPEN	(949) 495-4727	CENTER BASED	June 1, 2022
13	CA	OPEN	(949) 770-2708	CENTER BASED	April 9, 2019
14	CA	OPEN	(949) 661-6978	HEAD START	May 14, 2020
15	CA	OPEN	(949) 495-0050	SCHOOL BASED	May 13, 2020
16	CA	OPEN	(949) 218-6200	CENTER BASED	June 1, 2022
17	CA	OPEN	(949) 661-3355	CENTER BASED	May 13, 2020
18	CA	OPEN	(949) 364-4407	RELIGIOUS FACILITY	December 19, 2019
19	CA	OPEN	(949) 495-5162	CENTER BASED	June 1, 2022
20	CA	OPEN	(949) 643-1540	SCHOOL BASED	January 6, 2020
21	CA	OPEN	(949) 249-8687	CENTER BASED	June 1, 2022
22	CA	OPEN	(949) 249-3875	SCHOOL BASED	October 7, 2020
23	CA	OPEN	(949) 443-4050	CENTER BASED	January 5, 2020

#	VAL_METHOD	WEBSITE	ZIP	ZIP4	Count
1	IMAGERY/OTHER	NOT AVAILABLE	92677	NOT AVAILABLE	1
2	IMAGERY	NOT AVAILABLE	92694	NOT AVAILABLE	1
3	IMAGERY	NOT AVAILABLE	92677	NOT AVAILABLE	1
4	IMAGERY	NOT AVAILABLE	92677	NOT AVAILABLE	1
5	IMAGERY	NOT AVAILABLE	92677	NOT AVAILABLE	1

6	IMAGERY/OTHER	NOT AVAILABLE	92677	NOT AVAILABLE	1
7	IMAGERY/OTHER	NOT AVAILABLE	92677	NOT AVAILABLE	1
8	IMAGERY	NOT AVAILABLE	92677	NOT AVAILABLE	1
9	IMAGERY/OTHER	NOT AVAILABLE	92677	NOT AVAILABLE	1
10	IMAGERY/OTHER	NOT AVAILABLE	92677	NOT AVAILABLE	1
11	IMAGERY/OTHER	NOT AVAILABLE	92692	NOT AVAILABLE	1
12	IMAGERY/OTHER	NOT AVAILABLE	92677	NOT AVAILABLE	1
13	IMAGERY	NOT AVAILABLE	92692	NOT AVAILABLE	1
14	IMAGERY/OTHER	NOT AVAILABLE	92675	NOT AVAILABLE	1
15	IMAGERY/OTHER	NOT AVAILABLE	92677	NOT AVAILABLE	1
16	IMAGERY/OTHER	NOT AVAILABLE	92694	NOT AVAILABLE	1
17	IMAGERY/OTHER	NOT AVAILABLE	92675	NOT AVAILABLE	1
18	IMAGERY/OTHER	NOT AVAILABLE	92692	NOT AVAILABLE	1
19	IMAGERY/OTHER	NOT AVAILABLE	92677	NOT AVAILABLE	1
20	IMAGERY/OTHER	NOT AVAILABLE	92677	NOT AVAILABLE	1
21	IMAGERY/OTHER	NOT AVAILABLE	92677	NOT AVAILABLE	1
22	IMAGERY/OTHER	NOT AVAILABLE	92677	NOT AVAILABLE	1
23	IMAGERY/OTHER	NOT AVAILABLE	92675	NOT AVAILABLE	1