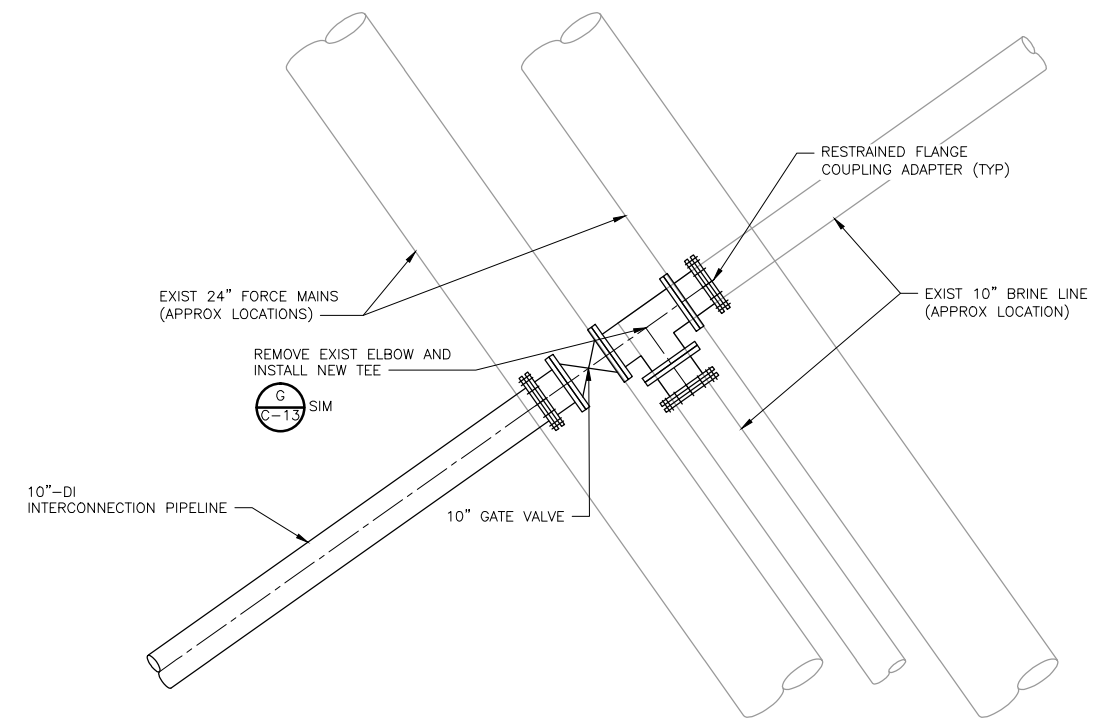


XREFs: [CDMS\_2234, CA-SCabi-Samra, CWP001ST] Images: [ ]  
 Last saved by: YOSHIMURAU Time: 7/29/2017 4:34:06 PM  
 C:\p\p1\yoshimura\067157\0\0110501.dwg  
 © 2015 CDM SMITH ALL RIGHTS RESERVED.  
 REUSE OF DOCUMENTS: THESE DOCUMENTS AND DESIGNS PROVIDED BY PROFESSIONAL SERVICE, INCORPORATED HEREIN, ARE THE PROPERTY OF CDM SMITH AND ARE NOT TO BE USED, IN WHOLE OR PART, FOR ANY OTHER PROJECT WITHOUT THE WRITTEN AUTHORIZATION OF CDM SMITH.

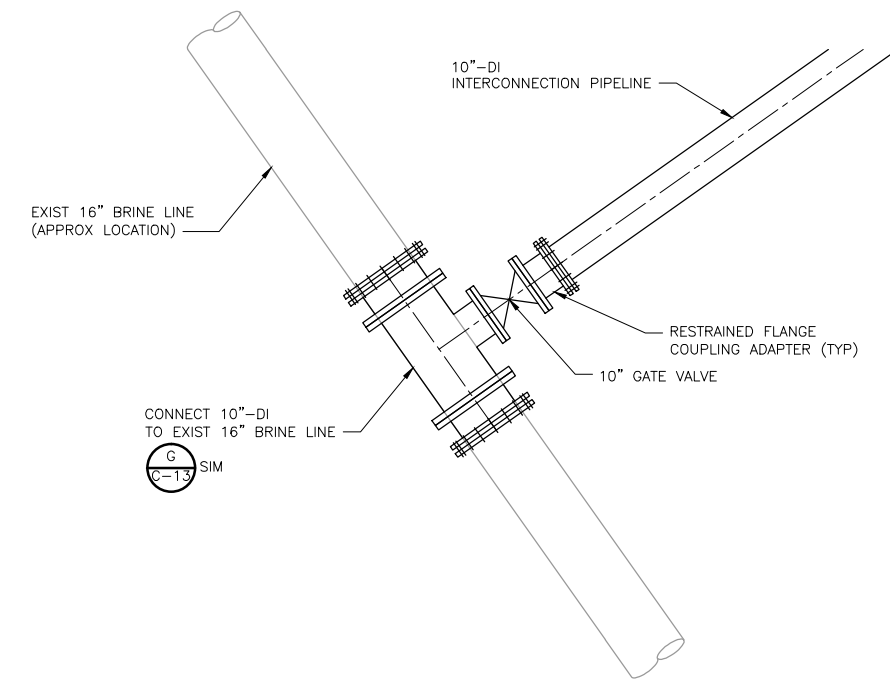


10" CONNECTION TO 16" AT LA SALINA WWTTP  
**PLAN**  
 1" = 20'



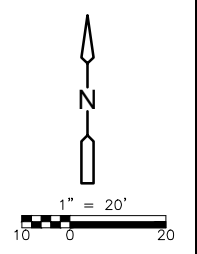
PLAN - CONNECTION TO 10" BRINE LINE AT LA SALINA WWTTP

**DETAIL A**  
 NTS



PLAN - CONNECTION TO 16" BRINE LINE IN TAIT STREET

**DETAIL B**  
 NTS



REV. NO.	DATE	DRWN	CHKD	REMARKS

DESIGNED BY: _____	BAS
DRAWN BY: _____	MP
SHEET CHK'D BY: _____	XX
CROSS CHK'D BY: _____	XX
APPROVED BY: _____	TCF
DATE: _____	AUGUST 2017



SAN LUIS REY WATER RECLAMATION FACILITY  
 RECYCLED WATER TREATMENT PLANT  
 DESIGN BUILD PROJECT

**CROSSWAITHE ST.  
 RECYCLED WATER CONNECTION**

**FIGURE 9-2**