

San Luis Low Point Improvement Project Environmental Impact Statement / Environmental Impact Report

**Appendix I: Environmental Justice Supporting
Information**

This page left blank intentionally.

Appendix I

Environmental Justice Supporting Information

This appendix supports Chapter 4, Section 4.18, Environmental Justice and contains area of analysis figures, as well as demographic and economic characteristic data from 2016 American Community Survey 5-Year Estimates by the United States (U.S.) Census Bureau for the area of analysis at a regional and local level. Information for the State of California as a whole is presented for comparison purposes.

Table I-1. Environmental Justice Local Area of Analysis Census Tract Numbers

Geographic Area		City(s)	Census Tract Number
Merced County	San Luis Reservoir Region	Gustine, Ingomar & Volta	20
		San Luis Reservoir State Recreation Area & Santa Nella	21
		Los Banos	22.01, 22.02, 23.01 and 23.02
Santa Clara County	SCVWD Service Area – Santa Teresa WTP	San Jose	5119.11
	Pacheco Reservoir	38 miles from San Jose	5135

Source: U.S Census Bureau 2010.

Key:

SCVWD = Santa Clara Valley Water District

WTP = waste treatment plant

Table I-2. Local Demographic Characteristics, 2012-2016

Geographic Area	Total Population	Race ¹							Hispanic Origin ²		Total Minority ³
		White	Black/ African American	American Indian and Alaska Native	Asian	Native Hawaiian/ Pacific Islander	Some Other Race	Two or More Races	White Alone, Non- Hispanic	All Races, Hispanic	
CT 20	7,644 (100%)	6,455 (84.4%)	34 (0.4%)	17 (0.2%)	35 (0.6%)	0 (0.0%)	839 (11.0%)	264 (3.5%)	2,984 (39.0%)	4,529 (59.2%)	4,660 (61.0%)
CT 21	4,229 (100%)	3,192 (75.5%)	94 (2.2%)	0 (0.0%)	246 (5.8%)	0 (0.0%)	534 (12.6%)	163 (3.9%)	999 (23.6%)	2,749 (65%)	3,230 (76.4%)
CT 22.01	5,541 (100%)	4,264 (77.0%)	46 (0.8%)	18 (0.3%)	52 (0.9%)	26 (0.5%)	979 (18.0%)	156 (2.8%)	1,033 (18.6%)	4,329 (78.1%)	4,508 (81.4%)
CT 22.02	9,868 (100%)	7,110 (72.1%)	135 (1.4%)	63 (0.6%)	346 (3.5%)	0 (0.0%)	1,781 (18.0%)	433 (4.4%)	1,824 (18.5%)	7,483 (76.0%)	8,044 (81.5%)
CT 23.01	6,899 (100%)	5,001 (72.5%)	85 (1.2%)	39 (0.6%)	293 (4.2%)	0 (0.0%)	1,051 (15.2%)	430 (6.2%)	3,097 (45.0%)	3,336 (48.4%)	3,802 (55.2%)
CT 23.02	15,009 (100%)	10,744 (72.0%)	457 (3.0%)	108 (0.7%)	439 (2.9%)	0 (0.0%)	2,544 (17.0%)	717 (5.0%)	2,855 (19.0%)	10,331 (68.8%)	12,154 (81.0%)
CT 5119.11	4,957 (100%)	3,088 (62.3%)	380 (7.7%)	14 (0.3%)	1,084 (21.9%)	0 (0.0%)	68 (1.4%)	323 (6.5%)	2,911 (58.7%)	240 (4.8%)	2,046 (41.3%)
CT 5135	854 (100%)	630 (73.8%)	27 (3.2%)	0 (0.0%)	60 (7.0%)	12 (1.4%)	15 (1.8%)	110 (12.9%)	481 (56.3%)	181 (21.2%)	373 (43.7%)
Merced Co.	265,001 (100%)	155,239 (58.6%)	8,902 (3.4%)	1,865 (0.7%)	19,843 (7.5%)	537 (0.2%)	66,865 (25.2%)	11,750 (4.4%)	78,119 (29.5%)	152,475 (57.5%)	186,882 (70.5%)
Santa Clara Co.	1,885,056 (100%)	883,775 (46.9%)	48,003 (2.5%)	8,742 (0.5%)	648,047 (34.4%)	7,810 (0.4%)	198,893 (10.6%)	89,786 (4.8%)	625,218 (33.2%)	496,591 (26.4%)	1,259,838 (66.8%)
California	38,654,206 (100%)	23,680,584 (61.3%)	2,261,835 (5.9%)	285,512 (0.8%)	5,354,608 (13.9%)	150,908 (0.4%)	5,133,600 (13.3%)	1,787,159 (4.6%)	14,837,242 (38.4%)	14,903,982 (38.6%)	23,816,964 (61.6%)

Source: U.S. Census Bureau 2016a.

Notes:

¹ A minority is defined as a member of the following population groups: American Indian/Alaskan Native, Asian or Pacific Islander, Black (non-Hispanic), or Hispanic (U.S. Census Bureau 2012).

² The term "Hispanic" is an ethnic category and can apply to members of any race, including respondents who self-identified as "White." The total numbers of Hispanic residents for each geographic region are tabulated separately from the racial distribution by the U.S. Census Bureau (U.S. Census Bureau 2012).

³ Total Minority" is the aggregation of all non-white racial groups with the addition of all Hispanics, regardless of race with the total for "Not Hispanic or Latino: While Alone" subtracted from the total population.

Key:

Boldface denotes areas with meaningfully greater total minority proportion (more than 50 percent).

CT = Census Tract

%= percent

Table I-2. Local Economic Characteristics, 2012-2016

Geographic Area	Median Household Income^{1,2}	Per Capita Income	Percent Population Below Poverty³
CT 20	\$40,083	\$22,536	15.5%
CT 21	\$41,744	\$17,434	22.2%
CT 22.01	\$26,997	\$13,477	39.6%
CT 22.02	\$50,561	\$17,156	17.0%
CT 23.01	\$53,871	\$24,587	8.1%
CT 23.02	\$46,635	\$16,303	20.0%
CT 5119.11	\$119,402	\$60,820	0.5%
CT 5135	\$101,111	\$49,863	3.1%
Merced Co.	\$44,397	\$19,130	20.6%
Santa Clara Co.	\$101,173	\$46,034	6.2%
California	\$63,783	\$31,458	11.8%

Source: U.S. Census Bureau 2016b.

Notes:

¹ Household income is defined by the U.S. Census Bureau as “the sum of money income received in the calendar year by all household members 15 years old and over” (U.S. Census Bureau 2012).

² In 2014 inflation adjusted dollars.

³ The census classifies families and persons as *below poverty* “if their total family income or unrelated individual income was less than the poverty threshold” as defined for all parts of the country by the Federal government (U.S. Census Bureau 2012). For 2014, the Federal weighted average poverty level threshold for an individual was \$12,316 and \$27,820 for a family of four (two adults and two children) (U.S. Census Bureau 2016b).

Key:

Boldface denotes areas with incomes meaningfully lower than the regional and State averages. Lack of boldface within the table denotes that no low-income areas exist.

CT = Census Tract

\$ = dollar amount

% = percent

-- = no data available

San Luis Low Point Improvement Project
 Draft Environmental Impact Statement/Environmental Impact Report

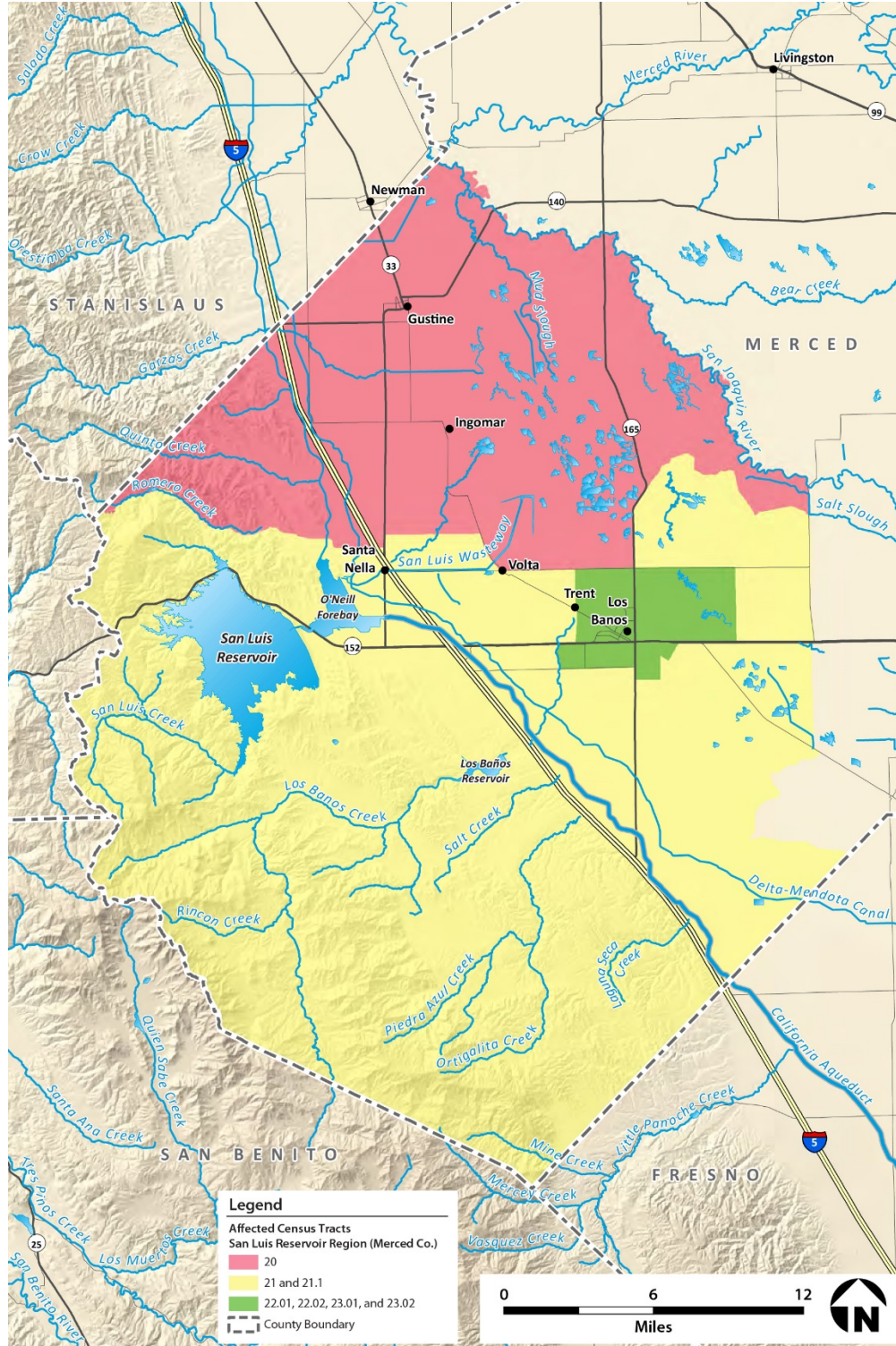


Figure I-1. Environmental Justice Area of Analysis
 (San Luis Reservoir Region – Census Tracts)

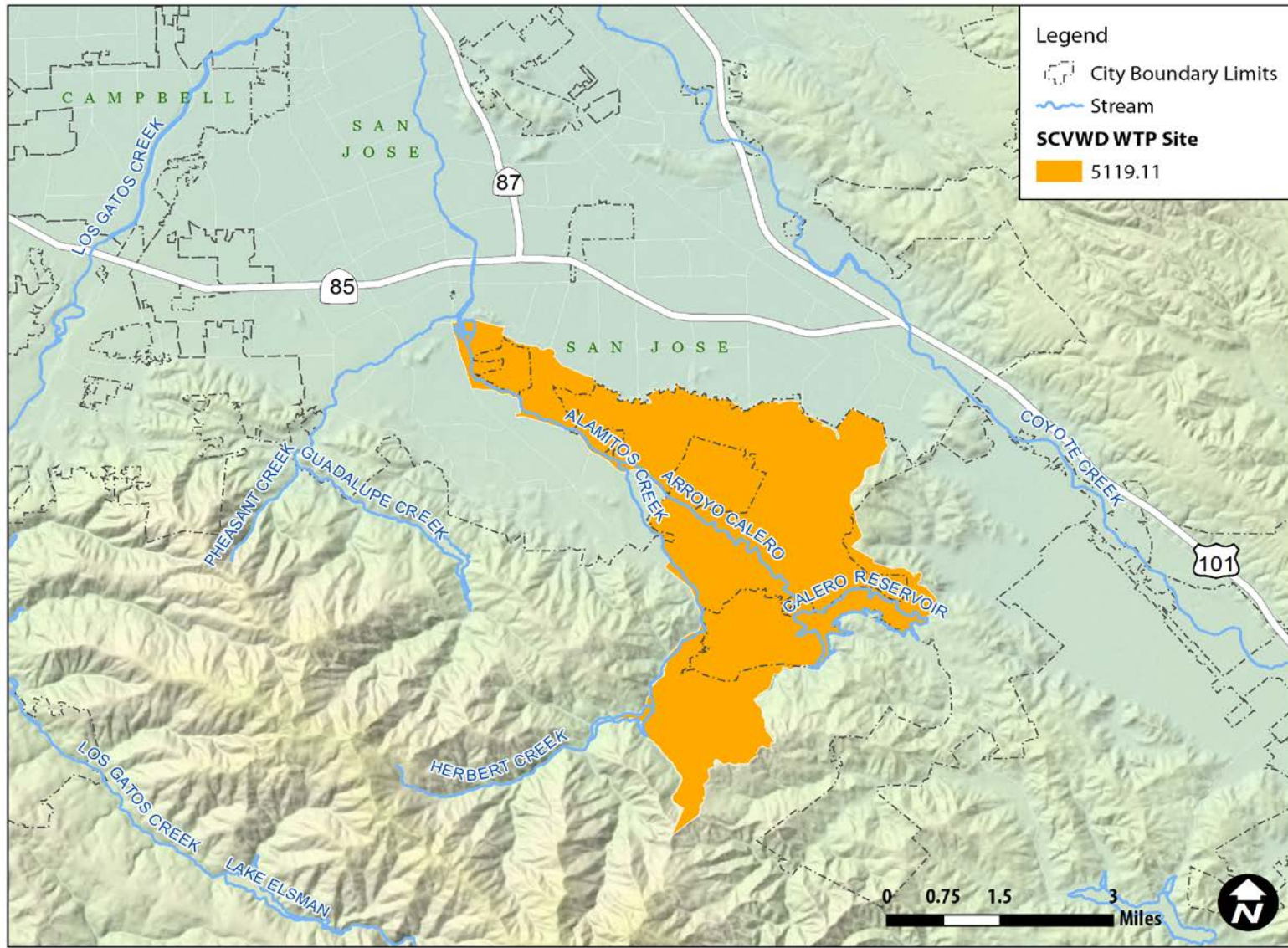


Figure I-2. Environmental Justice Area of Analysis SCVWD WTP - Census Tracts

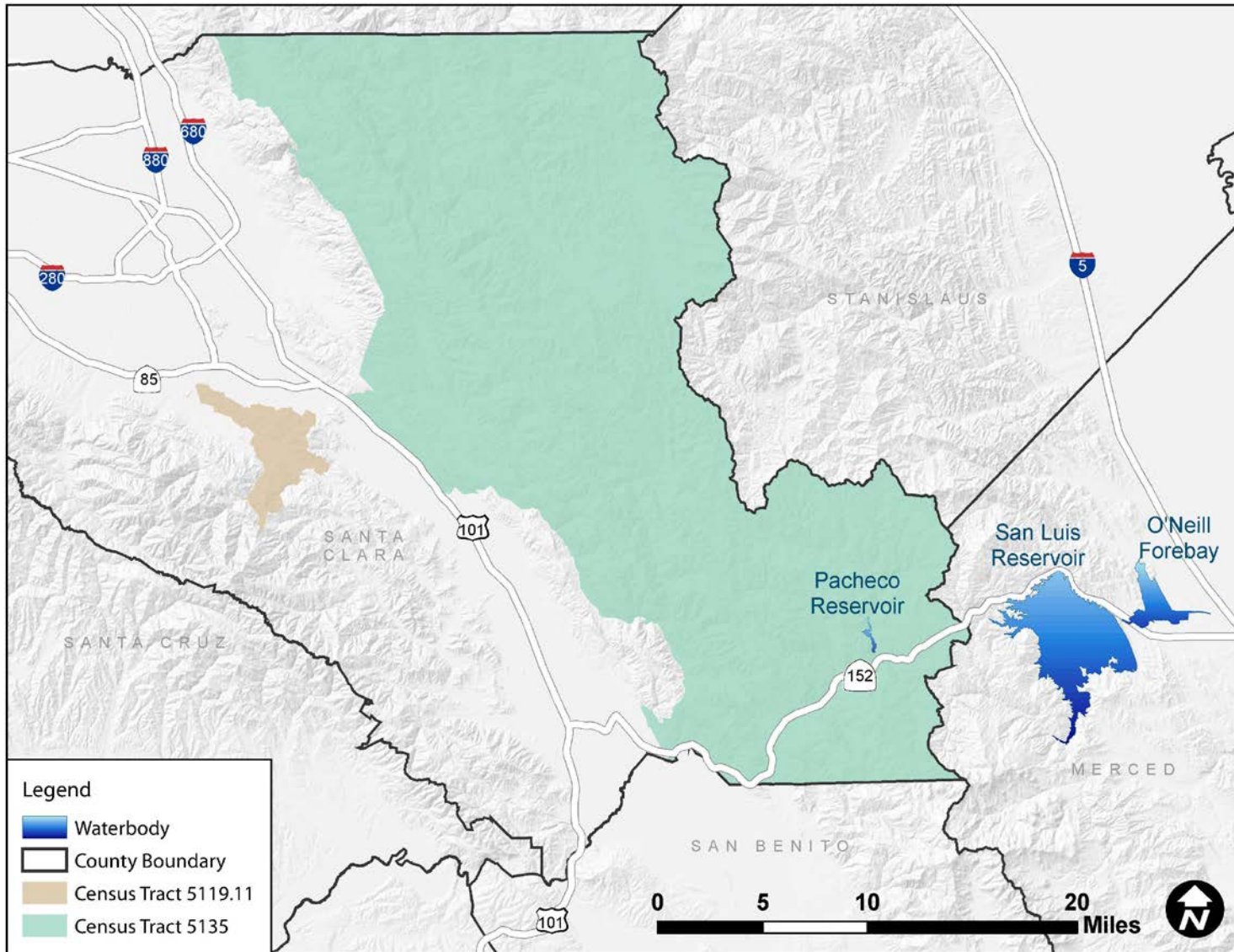


Figure I-3. Environmental Justice Area of Analysis
Pacheco Reservoir- Census Tracts

I.1 References

- United States Census Bureau. 2010. *2010 Census - Census Tract Reference Maps*. Accessed on: 25 03 2013. Available at: http://www.census.gov/geo/www/maps/pl10_map_suite/tract.html.
- .2012. *Definitions and Explanations of Terms*. Last Revised: April 19, 2012. Accessed on: 10 06 2016. Available at: <http://www.census.gov/main/www/glossary.html>.
- 2016a. *American Community Survey, Five Year Estimates 2012-2016, ACS Demographic and Housing Estimates*. Accessed on: 04 10 2018. Available at: <http://factfinder2.census.gov/>.
- .2016b. *American Community Survey, Five Year Estimates 2012-2016, Selected Economic Characteristics*. Accessed on: 04 10 2018. Available at: https://factfinder.census.gov/faces/tableservices/jsf/pages/productview.xhtml?pid=ACS_16_5YR_DP03&prodType=table

This page left blank intentionally.