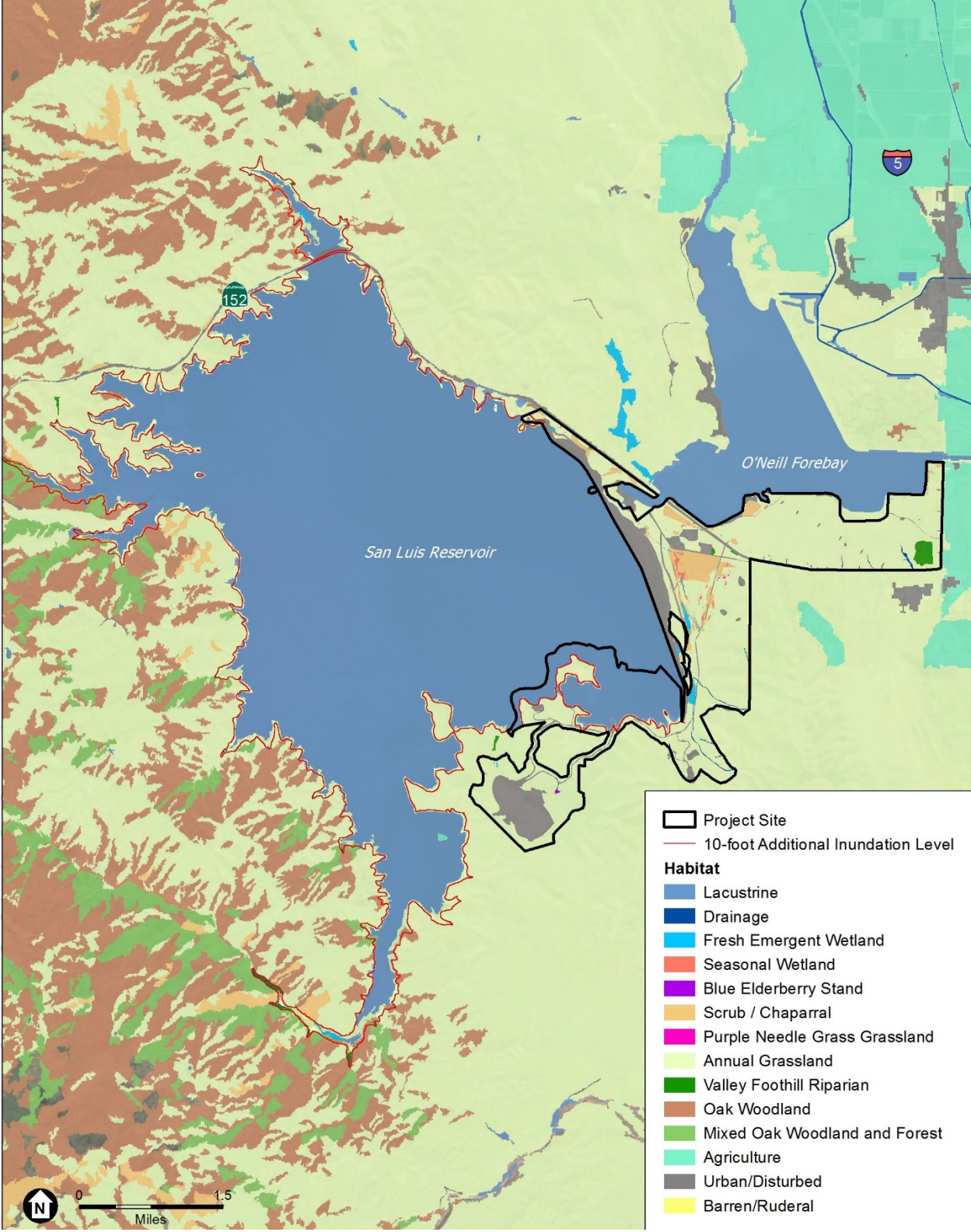


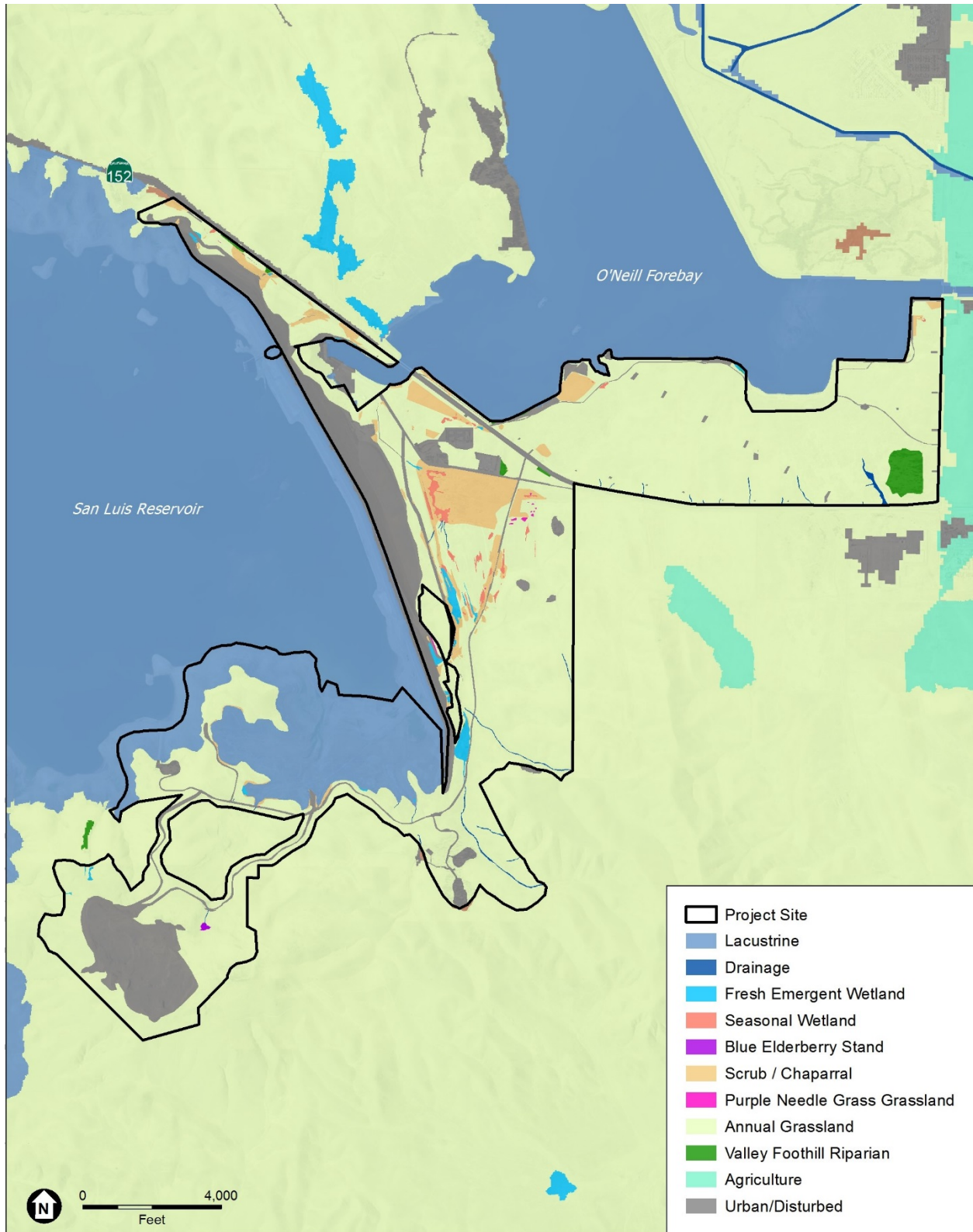
San Luis Low Point Improvement Project Environmental Impact Statement / Environmental Impact Report

Appendix M1: Terrestrial Resources Figures

This page left blank intentionally.

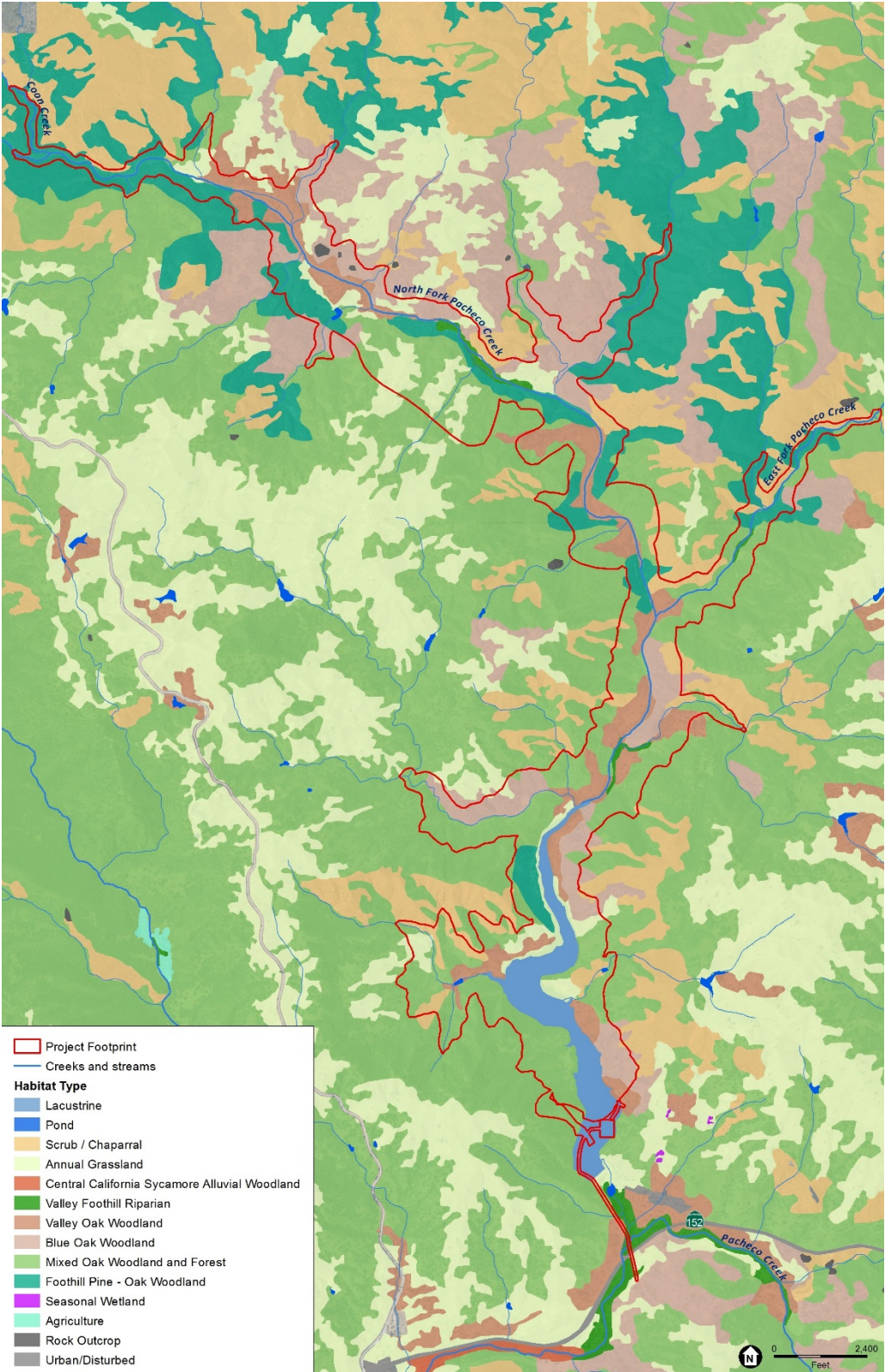


1
2 **Figure M1-1a. Habitats within the San Luis Reservoir Region**



1
2
3

Figure M1-1b. Close-up of Habitats in B.F. Sisk Project Area within the San Luis Reservoir Region



1
 2 Note: Habitat types from Santa Clara County (2012), with the following terminology adjustment: Reservoir = Lacustrine, Northern
 3 Coastal Scrub + Northern Mixed Chaparral = Scrub/Chaparral, California Annual Grassland = Annual Grassland, Willow Riparian
 4 Forest + Mixed Riparian Forest = Valley Foothill Riparian, Urban/Suburban = Urban/Disturbed

5 **Figure M1-2a. Habitats in Pacheco Reservoir Region**

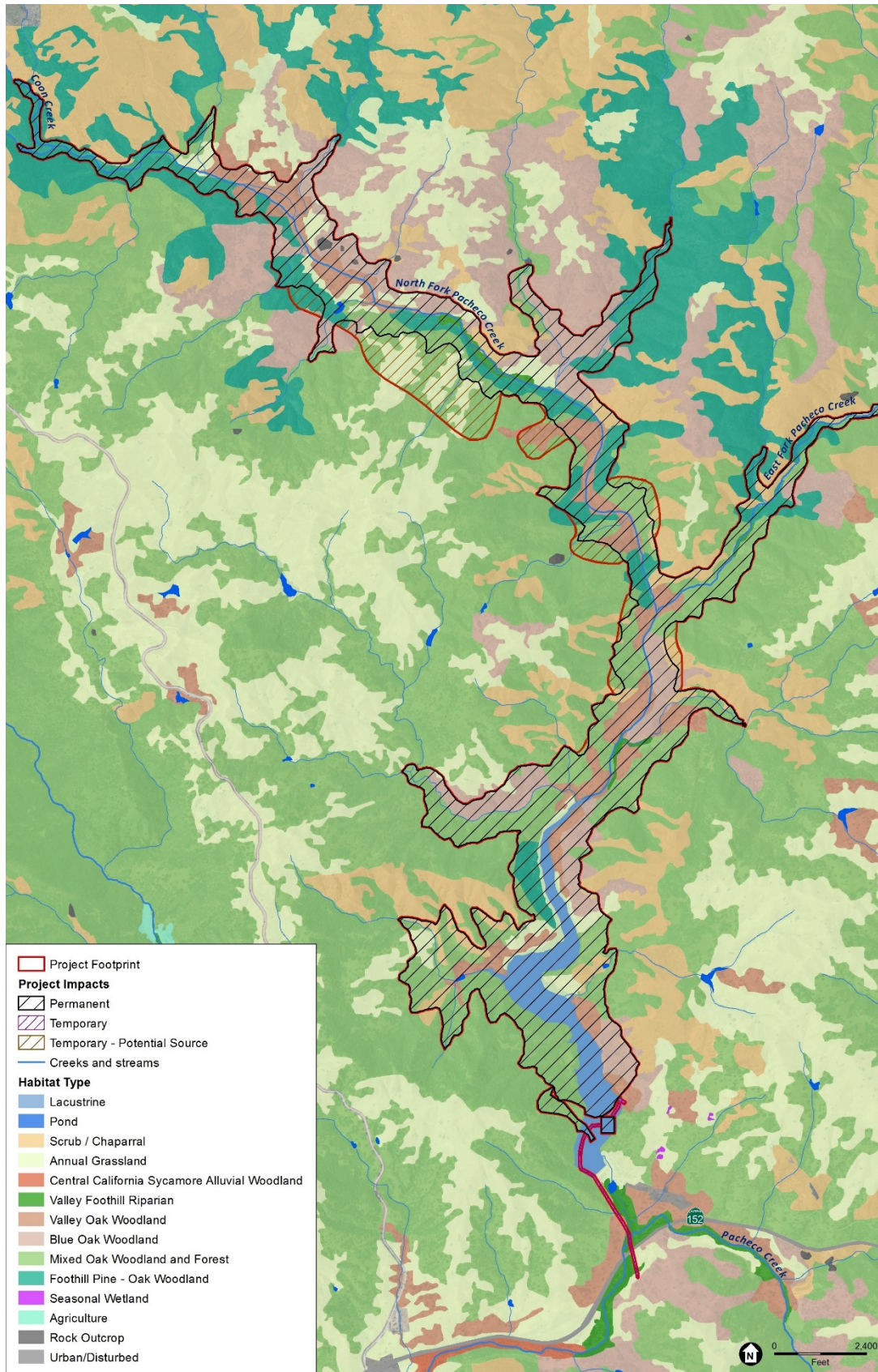
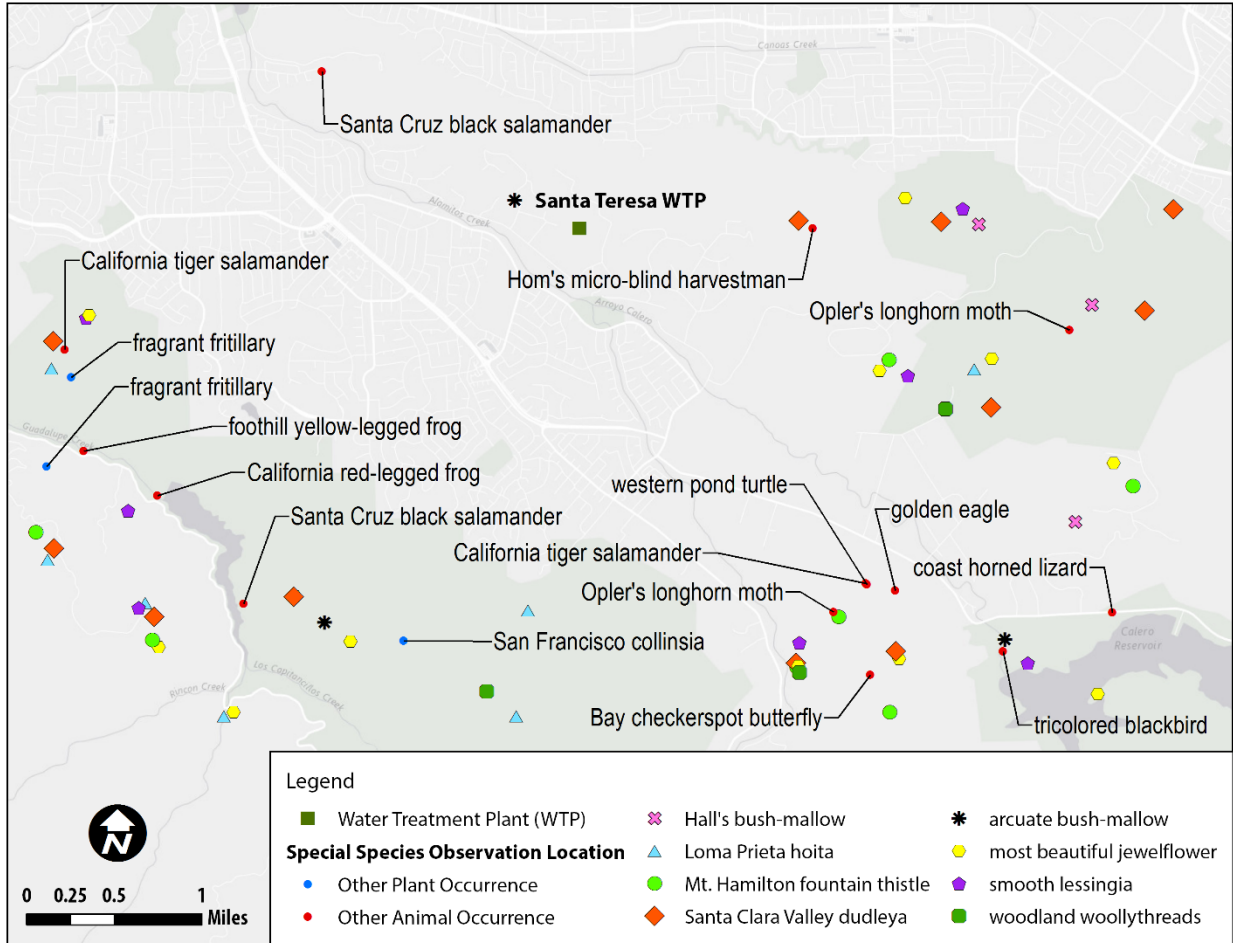


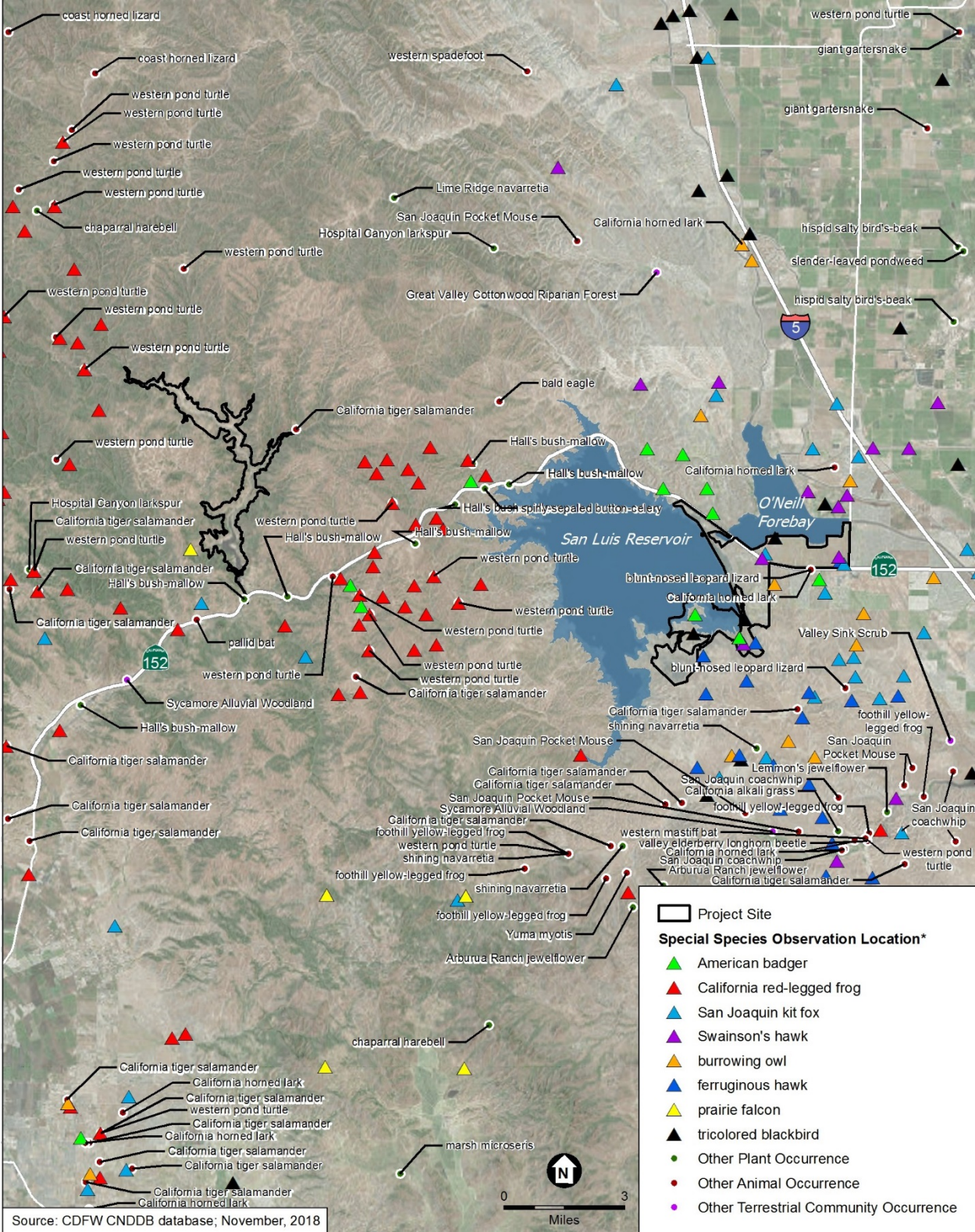
Figure M1-2b. Impact Area by Vegetation Type for Pacheco Reservoir Region



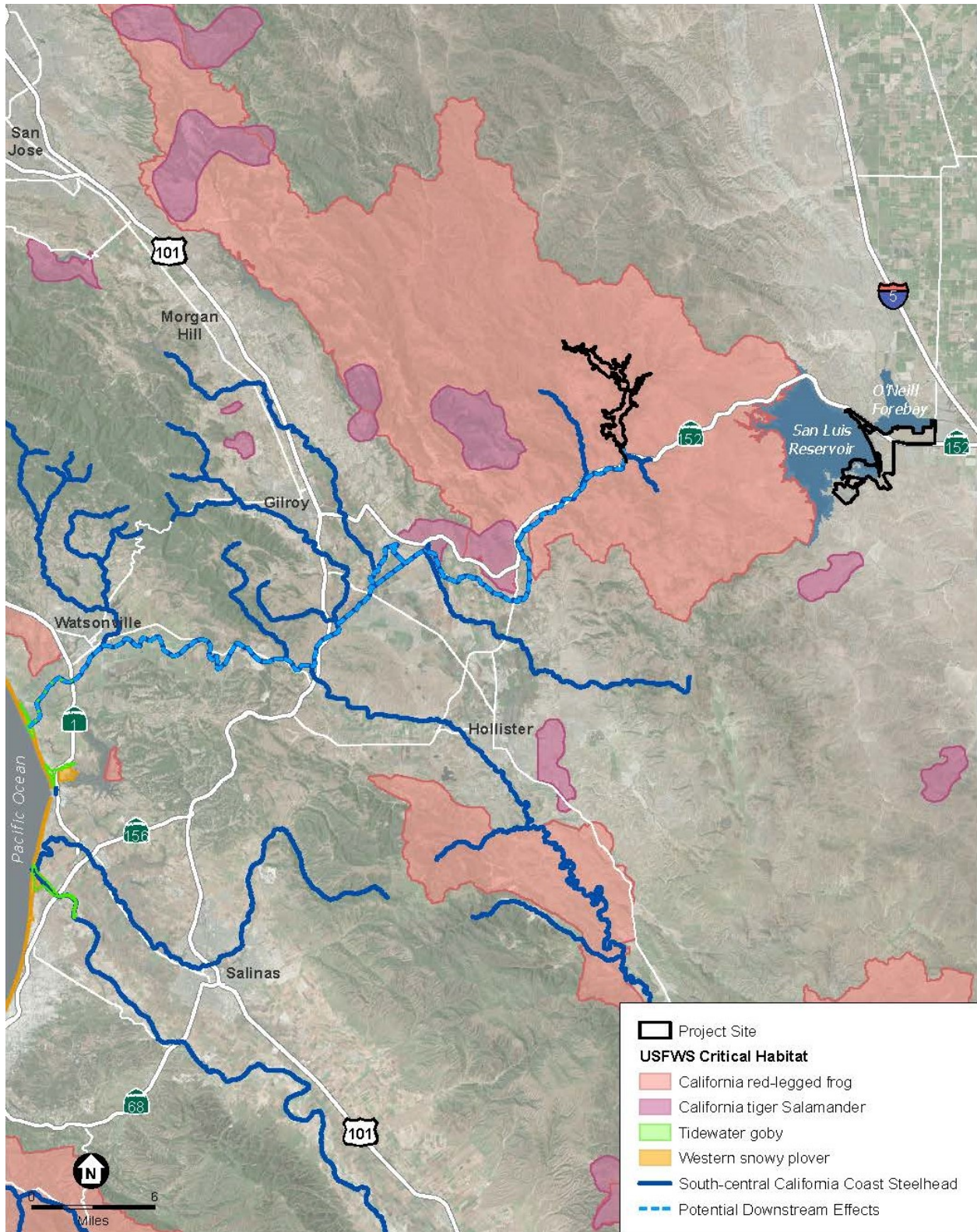
1

2 **Figure M1-4. Occurrences of Special-Status Species in the Santa Teresa WTP Area.**

3



1
 2 **Figure M1-5. Occurrences of Special-Status Species in the San Luis and Pacheco**
 3 **Reservoir Areas.**





Source: Photograph taken by Brian Pittman, ESA

Figure M1-7. California Red-legged Frog Breeding Site at Willow Spring Pond, north of Basalt Quarry.

1
2
3
4

5

1

2

This page left blank intentionally.

3