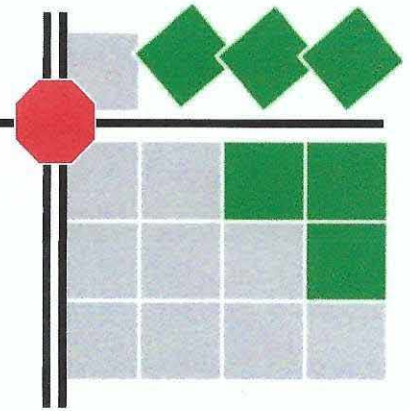


INFRASTRUCTURE GROUP, INC.

2672 N. Vista Crest Road
Orange, CA 92867
(714) 749-6386



April 23, 2021

Brian Stephenson, PE, TE, PTOE
Consulting Traffic Engineer
City of Murrieta
1 Town Square
Murrieta, CA 92562

Subject: Adams 10 R.V. Storage & Propane VMT Analysis

Dear Mr. Stephenson,

On September 22, 2020 our office prepared a trip generation analysis for the proposed Adams 10 R.V. Storage and Propane. The report is attached. Subsequently, in March of 2021 the city of Murrieta adopted new Traffic Impact Study Analysis guidelines to address the requirements of SB 743. This law requires local jurisdictions to analyze the Vehicle Miles Traveled (VMT) associated with a proposed project.

The threshold requiring a full VMT analysis in the guidelines is 110 daily trips. The proposed project is projected to generate 84 daily trips. Therefore, the proposed project is exempt from having to provide a full VMT analysis. In addition, the proposed project is an allowed use within the existing General Plan designation.

Lastly, the threshold for preparation of a more detailed Traffic Impact Analysis remains unchanged at 100 peak hour trips in the newly adopted guidelines. The proposed storage and distribution facility will generate 30 additional AM peak hour trips and 12 PM peak hour trips and continues to be exempt from that requirement.

Infrastructure Group Inc.

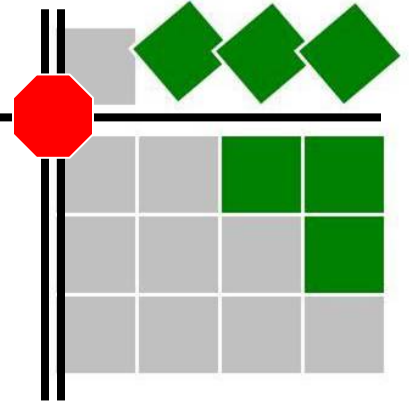
A California Corporation



Denis Bilodeau, PE, TE

INFRASTRUCTURE GROUP, INC.

Traffic Engineering Services
2672 N. Vista Crest Road
Orange, CA 92867
(714) 749-6386



September 22, 2020

Brian Stephenson, PE, TE, PTOE
Consulting Traffic Engineer
City of Murrieta
1 Town Square
Murrieta, CA 92562

Subject: Adams 10 R.V. Storage & Propane

Dear Mr. Stephenson,

INTRODUCTION

Infrastructure Group, Inc. (IGI) has prepared this trip generation analysis for the proposed recreational vehicle (RV), boat and propane distribution facility. The proposed project is on an undeveloped parcel on Adams Avenue in the city of Murrieta. The project preliminary site plan is attached.

PROPOSED DEVELOPMENT

The project site is currently vacant land. The proposed use is a 312 space Recreational Vehicle (R.V.) and boat storage on a 5.74 acre parcel & a propane distribution facility on a 1.15 acre parcel.

The purpose of this analysis is to identify the project trip generation and determine if a more detailed traffic analysis is required according to the City of Murrieta traffic impact analysis (TIA) guidelines. The TIA guidelines state that a project generally does not require a TIA if it generates less than 100 peak hour trips.

TRIP GENERATION

The potential trip generation of the proposed project was calculated using trip generation rates from the Institute of Transportation Engineers (ITE) *Trip Generation manual, 10th Edition (2017)* for self-storage use (Land Code 151 Mini-Warehouse. ITE does not publish a trip generation rate for RV storage use, but the trip-generating characteristics closely resemble those of self-storage (mini-warehouse) use. In addition, ITE does not publish a rate for a propane distribution facility. Our trip estimate for the propane distribution facility is based on the actual projected project on-site activity. We are using worst case scenario that all AM Tender Deliver Truck will arrive and depart in the AM Peak Hour. The propane facility is not open to the public.

Table 1 Project Trip Generation

Land Use	Size	Unit	ADT	AM Peak Hour			PM Peak Hour		
				In	Out	Total	In	Out	Total
<i>Trip Rates</i>									
Mini-Warehouse (RV & Boat Storage)		Per 100 Storage Spaces	17.96	0.710	0.680	1.390	0.980	0.970	1.950
Propane Distribution		<i>On-Site Employee</i>	4	1	1	2	1	1	2
		Tanker Truck Delivery	2	1	1	2	1	1	2
		Distribution Tender Trucks	2	1	1	2	0	0	0
Project Trip Generation									
RV & Boat Storage	312	Per 100 Storage Spaces	56	2	2	4	3	3	6
Propane Distribution	1	On-Site Employee	4	1	1	2	1	1	2
	2	Tanker Truck Delivery	4	2	2	4	2	2	4
	10	Distribution Tender Trucks	20	10	10	20	0	0	0
Total Trips			84			30			12

In order to verify that the trip generation rates published in the ITE *Trip Generation manual, 10th Edition (2017)* for self-storage use (Land Code 151 Mini-Warehouse) closely resemble that of R.V. and Boat self-storage, a literature search was performed. LSA Associates prepared a technical memorandum for a similar facility, and performed counts at a facility in Desert Hot Springs in February 2020 (pre Covid-19). The study showed that the ITE rates are conservative when compared to actual gate count data. The memorandum is attached.

Conclusion

Trip generation rates were calculated for Average Daily Trips (ADT), morning peak hour trips and evening peak hour trips for the proposed land use. Table 1 shows the project trip generation based upon rates obtained from the Institute of Transportation Engineers, *Trip Generation Manual, 10th edition, 2017*.

The proposed storage and distribution facility will generate 30 additional AM peak hour trips, 12 PM peak hour trips and 84 daily trips.

Based on the threshold of 100 peak hour trips identified in the City of Murrieta *Traffic Impact Analysis Preparation Guidelines (2020)*, the proposed project is exempt from traffic impact analysis requirements including any intersection analysis.

Infrastructure Group Inc.

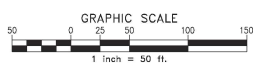
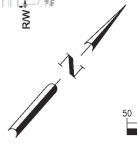
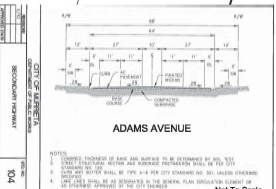
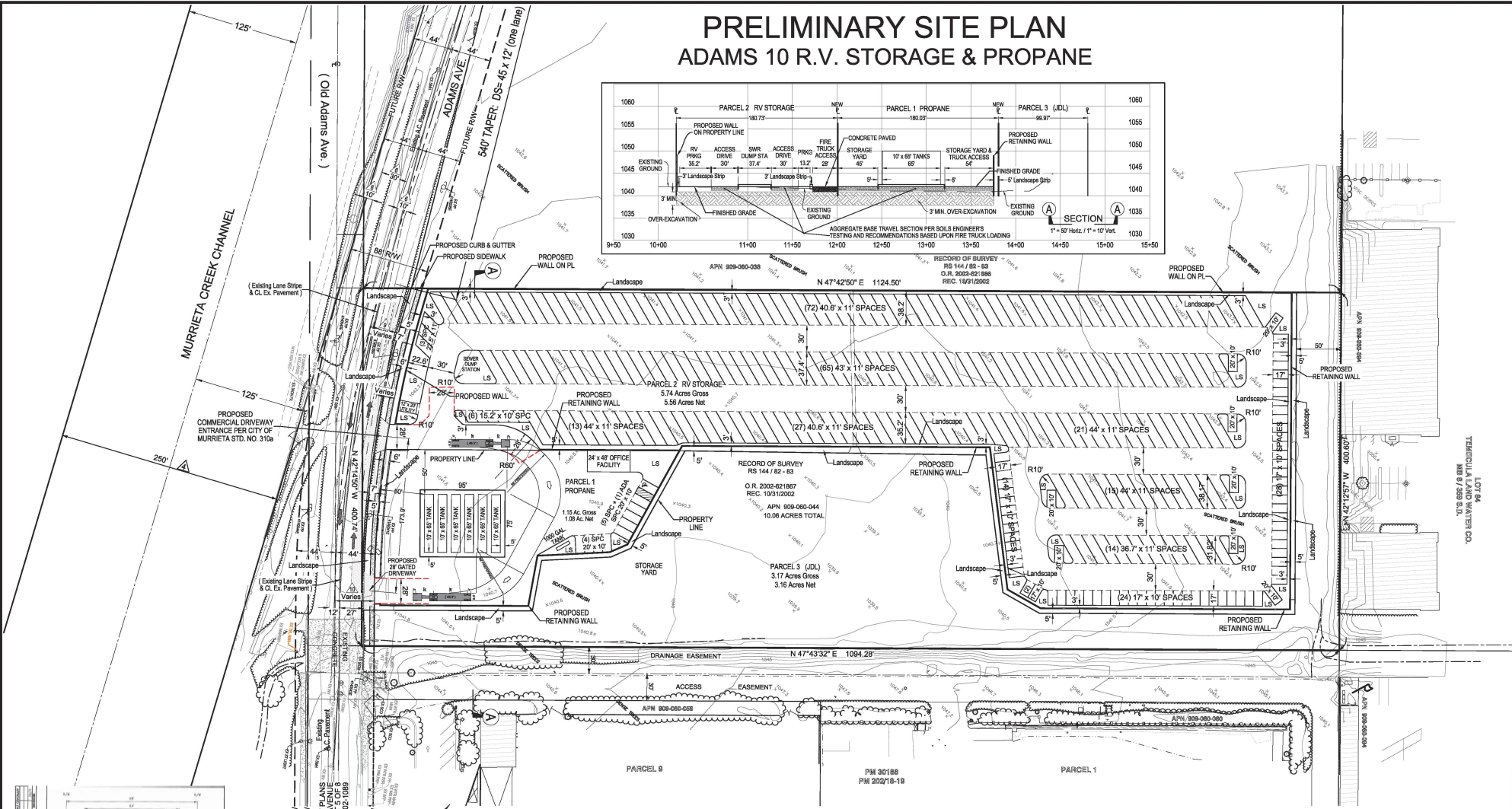
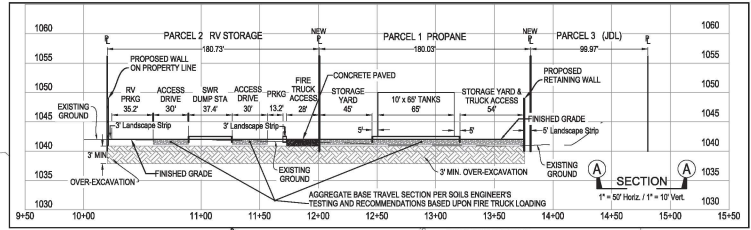
A California Corporation

Denis Bilodeau



Denis Bilodeau, PE

PRELIMINARY SITE PLAN ADAMS 10 R.V. STORAGE & PROPANE



RDS And Associates
Civil Engineering
Project Management
Construction Management

rd11@rdassociates.com
(951) 691-7706
Rich Soltysiak

APPROVED FOR SIGNATURE:
WILLIAM C. BIXBY
BUREAU VERITAS NORTH AMERICA, INC.
R.C.E. NO. 48919

SCALE:
HORIZONTAL: 1" = 50'
VERTICAL: 1" = 10'
UNDER THE SUPERVISION OF:
RICHARD D. SOLTYSIAK
RCE NO. 37233 EXP. 06/30/2022

DATE	INITIAL	REVISION DESCRIPTION

WID #:

SHEET 1	CITY OF MURRIETA ENGINEERING DEPARTMENT	OF SHEET 1
---------	--	------------

PRELIMINARY SITE PLAN
FOR LOT 76 BK8 P359
ADAMS 10 R.V. STORAGE & PROPANE

APPROVED: ROBERT K. WACHUNG
CITY ENGINEER
CITY OF MURRIETA

DATE: _____
RCE: 63066 EXP. DATE: 6/23/22

DRAWN BY: _____
CHKD BY: _____
FIELD BY: _____

PROJECT NO. _____
DRAWING NO. _____

Underground Service Alert
Call: TOLL FREE
1-800
422-4133

DWG: ADAMS 10 RV Storage SP.dwg SHEET:SP DATE: Aug 04, 2020 - 4:58:55pm



MEMORANDUM

DATE: February 27, 2020

To: Annie Baek, InSite Property Group

FROM: Dean Arizabal, LSA

SUBJECT: Trip Generation Analysis for the Proposed Self-Storage and RV Storage Facility at 3701 Pacific Place, Long Beach, California

LSA has prepared this trip generation analysis for the proposed self-storage and recreational vehicle (RV) storage facility (project) in Long Beach, California. The proposed project is at 3701 Pacific Place, the former site of the Long Beach Golf Learning Center. The proposed project will construct a 150,000-gross-square-foot building with 1,100 self-storage units and 580 RV storage spaces on the currently vacant property.

The project site is north of the Interstate 405 (I-405) freeway, east of the Interstate 710 (I-710) freeway and the Los Angeles River, and west of the Los Angeles Metropolitan Transportation Authority (Metro) A Line light rail tracks and Los Cerritos Park. Access to the site is currently provided at the signalized intersection of Pacific Place/Wardlow Road and the unsignalized intersection of Pacific Place/I-405 and I-710 northbound on-ramps.

The purpose of this analysis is to identify the proposed project trip generation and determine whether the project would require a more-detailed traffic analysis according to the City of Long Beach's (City) *Traffic Impact Analysis (TIA) Guidelines*. The *TIA Guidelines* state that a TIA should be prepared for every project that would generate more than 100 vehicle trips per day. The TIA requirement can be waived by the City Traffic Engineer where impacts are deemed negligible. In addition, the *TIA Guidelines* state that intersections at which the project contributes a total of 50 or more peak-hour trips should be analyzed. As such, this trip generation analysis evaluates the proposed project against the City's two trip thresholds.

Trip Generation

The potential trip generation of the proposed project was calculated using trip generation rates from the Institute of Transportation Engineers (ITE) *Trip Generation Manual*, 10th Edition (2017) for self-storage use (Land Use Code 151: Mini-Warehouse). Although ITE does not have trip rates for RV storage use, the trip-generating characteristics of an RV storage use closely resemble those of a self-storage (mini-warehouse) use. Table A presents the trip generation estimate using the ITE (Land Use Code 151) trip rates for the proposed project of 1,100 self-storage units and 580 RV storage spaces (considered "units" for purposes of the trip generation).

Table A: Project Trip Generation (ITE Trip Rates)

Land Use	Size	Unit	ADT	AM Peak Hour			PM Peak Hour		
				In	Out	Total	In	Out	Total
Trip Rates									
Mini-Warehouse (Self-Storage and RV Storage) ¹		100 storage units (100 RV spaces)	17.960	0.710	0.680	1.390	0.980	0.970	1.950
Project Trip Generation									
Self-Storage and RV Storage ²	16.80	100 storage units (100 RV spaces)	302	12	11	23	17	16	33

¹ Trip rates referenced from the Institute of Transportation Engineers (ITE) *Trip Generation Manual*, 10th Edition (2017).

Land Use Code (151) - Mini Warehouse

² Proposed project includes 1,100 self-storage units and 580 RV storage spaces (1,680 total units and spaces).

ADT = average daily traffic

RV = recreational vehicle

As Table A shows, the proposed project is estimated to generate 302 daily trips, 23 of which would occur in the a.m. peak hour and 33 of which would occur in the p.m. peak hour, using ITE trip rates.

As an alternative method to calculating trips for the self-storage and RV storage uses, LSA also applied trip rates developed from gate data (vehicle entries and exits) recorded between November 2019 and January 2020 for a self-storage facility in Moreno Valley (14150 Grant Street) and a self-storage and RV storage facility in Desert Hot Springs (15305 Little Morongo Road). The gate data is provided as an attachment. Table B presents the trip generation estimate for the proposed project using the gate trip rates for the 1,100 self-storage units and the 580 RV storage spaces.

Table B: Project Trip Generation (Gate Trip Rates)

Land Use	Size	Unit	ADT	AM Peak Hour			PM Peak Hour		
				In	Out	Total	In	Out	Total
Trip Rates¹									
Self-Storage		100 storage units	12.90	0.53	0.40	0.93	0.93	0.79	1.72
RV Storage		100 RV spaces	17.23	0.50	0.47	0.97	0.93	1.12	2.05
Project Trip Generation									
Self-Storage	11.00	100 storage units	142	6	4	10	10	9	19
RV Storage	5.80	100 RV spaces	100	3	3	6	5	7	12
Total			242	9	7	16	15	16	31

¹ Trip rates developed from gate data for the Moreno Valley Self Storage and Desert Hot Springs Self Storage and RV Storage facilities (November 2019 to January 2020).

ADT = average daily traffic

RV = recreational vehicle

As Table B shows, the proposed project is estimated to generate 242 daily trips, 16 of which would occur in the a.m. peak hour and 31 of which would occur in the p.m. peak hour, using trip rates developed from gate data of one existing self-storage facility and one existing self-storage and RV storage facility.

Conclusion

LSA analyzed the trip generation for the proposed project to determine whether it would require a more-detailed traffic analysis according to the City's *TIA Guidelines*. Using ITE trip rates or trip rates developed from similar facilities currently in operation, the proposed project is anticipated to generate a maximum of 302 daily trips, including a maximum of 33 trips during the peak hours.

Although the proposed project would generate more than 100 trips per day, it would generate fewer than 50 trips per peak hour. Because the proposed project would not contribute 50 or more trips per peak hour to any intersection, an intersection analysis is not required per the *TIA Guidelines*. A maximum project contribution of 33 peak-hour trips to the adjacent intersections is nominal, and the potential for an intersection impact is unlikely. As such, LSA recommends that the City Traffic Engineer waive the TIA requirement for this project.

If you have any questions, please contact me at (949) 553-0666.

Attachment: Self Storage and RV Storage Gate Data (November 2019 to January 2020)



Self Storage Trip Generation and Trip Rates (Moreno Valley and Desert Hot Springs)

Trip Generation

Day and Date	Size ¹	Daily	AM Peak Hour ²			PM Peak Hour ³		
			In	Out	Total	In	Out	Total
Tuesday 11/5/19		170	9	4	13	20	30	50
Wednesday 11/6/19		164	4	5	9	5	8	13
Thursday 11/7/19		194	8	6	14	10	10	20
Tuesday 11/12/19		167	9	14	23	17	10	27
Wednesday 11/13/19		209	11	9	20	17	15	32
Thursday 11/14/19		188	9	6	15	8	8	16
Tuesday 11/19/19		219	14	6	20	10	10	20
Wednesday 11/20/19		173	6	8	14	7	9	16
Thursday 11/21/19		183	15	9	24	11	12	23
Tuesday 12/3/19		182	8	7	15	21	11	32
Wednesday 12/4/19		162	9	10	19	9	8	17
Thursday 12/5/19		213	3	3	6	19	13	32
Tuesday 12/10/19		209	5	3	8	16	10	26
Wednesday 12/11/19		225	6	9	15	22	9	31
Thursday 12/12/19		206	8	4	12	19	18	37
Tuesday 12/17/19		174	13	6	19	8	7	15
Wednesday 12/18/19		242	9	7	16	16	13	29
Thursday 12/19/19		188	5	2	7	17	14	31
Tuesday 1/7/20		213	13	8	21	16	16	32
Wednesday 1/8/20		195	3	2	5	24	10	34
Thursday 1/9/20		210	5	4	9	22	7	29
Tuesday 1/14/20		202	10	11	21	13	14	27
Wednesday 1/15/20		218	13	8	21	10	13	23
Thursday 1/16/20		195	5	6	11	18	14	32
Tuesday 1/28/20		162	7	5	12	6	7	13
Wednesday 1/29/20		204	4	5	9	14	14	28
Thursday 1/30/20	15.12	203	6	4	10	6	11	17
Average	15.12	195	8	6	14	14	12	26

Trip Rates

Land Use Type	Size	Daily	AM Peak Hour			PM Peak Hour		
			In	Out	Total	In	Out	Total
Self Storage	1.00	12.90	0.53	0.40	0.93	0.93	0.79	1.72

¹ Size is the total number of self storage units of the Moreno Valley and Desert Hot Springs self storage facilities (in hundreds).

² AM Peak Hour is the one-hour period between 7:00 and 9:00 a.m. with the highest trip generation (7:00-8:00, 7:15-8:15, 7:30-8:30, 7:45-8:45, or 8:00-9:00 a.m.).

³ PM Peak Hour is the one-hour period between 4:00 and 6:00 a.m. with the highest trip generation (4:00-5:00, 4:15-5:15, 4:30-5:30, 4:45-5:45, or 5:00-6:00 p.m.).



RV Storage Trip Generation and Trip Rates (Desert Hot Springs)

Trip Generation

Day and Date	Size ¹	Daily	AM Peak Hour ²			PM Peak Hour ³		
			In	Out	Total	In	Out	Total
Tuesday 11/5/19		50	0	0	0	0	3	3
Wednesday 11/6/19		57	1	2	3	4	2	6
Thursday 11/7/19		49	1	1	2	5	5	10
Tuesday 11/12/19		37	0	0	0	3	5	8
Wednesday 11/13/19		38	1	0	1	0	0	0
Thursday 11/14/19		52	2	1	3	2	2	4
Tuesday 11/19/19		41	3	2	5	1	2	3
Wednesday 11/20/19		49	3	3	6	3	7	10
Thursday 11/21/19		55	3	3	6	4	3	7
Tuesday 12/3/19		43	1	1	2	3	3	6
Wednesday 12/4/19		24	0	0	0	0	1	1
Thursday 12/5/19		65	3	4	7	1	2	3
Tuesday 12/10/19		52	0	0	0	4	4	8
Wednesday 12/11/19		44	1	0	1	1	2	3
Thursday 12/12/19		44	2	2	4	3	5	8
Tuesday 12/17/19		38	1	1	2	2	3	5
Wednesday 12/18/19		54	1	1	2	2	3	5
Thursday 12/19/19		49	3	3	6	3	2	5
Tuesday 1/7/20		70	1	1	2	6	4	10
Wednesday 1/8/20		32	1	1	2	0	1	1
Thursday 1/9/20		35	0	0	0	2	2	4
Tuesday 1/14/20		39	2	2	4	4	3	7
Wednesday 1/15/20		58	2	2	4	5	7	12
Thursday 1/16/20		57	3	2	5	7	5	12
Tuesday 1/28/20		48	1	2	3	2	3	5
Wednesday 1/29/20		50	1	0	1	1	2	3
Thursday 1/30/20	2.78	63	1	1	2	2	3	5
Average	2.78	48	1	1	3	3	3	6

Trip Rates

Land Use Type	Size	Daily	AM Peak Hour			PM Peak Hour		
			In	Out	Total	In	Out	Total
RV Storage	1.00	17.23	0.50	0.47	0.97	0.93	1.12	2.05

¹ Size is the total number of RV storage spaces of the Desert Hot Springs RV storage facility (in hundreds).

² AM Peak Hour is the one-hour period between 7:00 and 9:00 a.m. with the highest trip generation (7:00-8:00, 7:15-8:15, 7:30-8:30, 7:45-8:45, or 8:00-9:00 a.m.).

³ PM Peak Hour is the one-hour period between 4:00 and 6:00 a.m. with the highest trip generation (4:00-5:00, 4:15-5:15, 4:30-5:30, 4:45-5:45, or 5:00-6:00 p.m.).

Summary

Moreno Valley Self Storage Trip Generation

Daily	AM Peak In	AM Peak Out	PM Peak In	PM Peak Out	
Tuesday 11/5/19	116	8	3	10	4
Wednesday 11/6/19	93	2	3	3	5
Thursday 11/7/19	111	6	2	3	6
Tuesday 11/12/19	106	4	4	6	4
Wednesday 11/13/19	125	6	5	8	8
Thursday 11/14/19	108	4	4	6	6
Tuesday 11/19/19	130	13	5	5	7
Wednesday 11/20/19	110	3	5	5	7
Thursday 11/21/19	100	10	4	5	6
Tuesday 12/3/19	101	3	4	13	6
Wednesday 12/4/19	97	3	6	5	2
Thursday 12/5/19	118	2	2	5	6
Tuesday 12/10/19	109	1	1	9	4
Wednesday 12/11/19	112	2	3	14	4
Thursday 12/12/19	121	5	1	11	9
Tuesday 12/17/19	106	8	4	3	5
Wednesday 12/18/19	123	3	3	8	7
Thursday 12/19/19	101	2	1	11	9
Tuesday 1/7/20	94	8	3	9	7
Wednesday 1/8/20	107	3	2	12	5
Thursday 1/9/20	114	0	1	8	4
Tuesday 1/14/20	109	6	7	8	6
Wednesday 1/15/20	111	8	2	4	4
Thursday 1/16/20	85	1	3	5	4
Tuesday 1/28/20	97	3	2	4	4
Wednesday 1/29/20	122	2	2	4	7
Thursday 1/30/20	113	4	3	3	5

Summary

Desert Hot Springs Self Storage Trip Generation

Daily	AM Peak In	AM Peak Out	PM Peak In	PM Peak Out
Tuesday 11/5/19	54	1	1	26
Wednesday 11/6/19	71	2	2	3
Thursday 11/7/19	83	2	4	4
Tuesday 11/12/19	61	5	10	6
Wednesday 11/13/19	84	5	4	7
Thursday 11/14/19	80	5	2	2
Tuesday 11/19/19	89	1	1	3
Wednesday 11/20/19	63	3	3	2
Thursday 11/21/19	83	5	5	6
Tuesday 12/3/19	81	5	3	5
Wednesday 12/4/19	65	6	4	6
Thursday 12/5/19	95	1	1	7
Tuesday 12/10/19	100	4	2	6
Wednesday 12/11/19	113	4	6	5
Thursday 12/12/19	85	3	3	9
Tuesday 12/17/19	68	5	2	2
Wednesday 12/18/19	119	6	4	6
Thursday 12/19/19	87	3	1	5
Tuesday 1/7/20	119	5	5	9
Wednesday 1/8/20	88	0	0	5
Thursday 1/9/20	96	5	3	3
Tuesday 1/14/20	93	4	4	8
Wednesday 1/15/20	107	5	6	9
Thursday 1/16/20	110	4	3	10
Tuesday 1/28/20	65	4	3	3
Wednesday 1/29/20	82	2	3	7
Thursday 1/30/20	90	2	1	6

Summary

Desert Hot Springs RV Storage Trip Generation

Daily	AM Peak In	AM Peak Out	PM Peak In	PM Peak Out
Tuesday 11/5/19	50	0	0	3
Wednesday 11/6/19	57	1	2	2
Thursday 11/7/19	49	1	1	5
Tuesday 11/12/19	37	0	0	5
Wednesday 11/13/19	38	1	0	0
Thursday 11/14/19	52	2	1	2
Tuesday 11/19/19	41	3	2	2
Wednesday 11/20/19	49	3	3	7
Thursday 11/21/19	55	3	3	3
Tuesday 12/3/19	43	1	1	3
Wednesday 12/4/19	24	0	0	1
Thursday 12/5/19	65	3	4	2
Tuesday 12/10/19	52	0	0	4
Wednesday 12/11/19	44	1	0	2
Thursday 12/12/19	44	2	2	5
Tuesday 12/17/19	38	1	1	3
Wednesday 12/18/19	54	1	1	3
Thursday 12/19/19	49	3	3	2
Tuesday 1/7/20	70	1	1	4
Wednesday 1/8/20	32	1	1	1
Thursday 1/9/20	35	0	0	2
Tuesday 1/14/20	39	2	2	3
Wednesday 1/15/20	58	2	2	7
Thursday 1/16/20	57	3	2	5
Tuesday 1/28/20	48	1	2	3
Wednesday 1/29/20	50	1	0	2
Thursday 1/30/20	63	1	1	3

Pivot Moreno Entry

Date	COUNTA of Name	SUM of Peak AM 7-8	SUM of Peak AM 7:15-8:15	SUM of Peak AM 7:30-8:30	SUM of Peak AM 7:45-8:45	SUM of Peak AM 8-9	SUM of Peak PM 4-5	SUM of Peak PM 4:15-5:15	SUM of Peak PM 4:30-5:30	SUM of Peak PM 4:45-5:45	SUM of Peak PM 5-6
11/5/2019	65	7	8	2	2	0	4	4	3	5	10
11/6/2019	45	1	0	1	2	0	2	2	2	1	3
11/7/2019	49	3	4	2	6	0	3	3	3	3	2
11/12/2019	57	4	3	2	1	0	6	4	4	1	1
11/13/2019	69	2	6	6	6	0	3	5	5	8	6
11/14/2019	55	3	3	2	4	0	4	5	4	6	5
11/19/2019	66	2	9	13	13	0	3	4	5	5	5
11/20/2019	53	3	3	2	2	0	5	5	4	3	4
11/21/2019	52	10	10	8	3	0	5	2	2	2	1
12/3/2019	50	2	2	3	2	0	13	9	9	0	0
12/4/2019	47	3	2	2	2	0	1	2	3	5	4
12/5/2019	57	2	2	2	1	0	4	5	4	4	2
12/10/2019	57	1	1	0	0	0	6	5	9	7	6
12/11/2019	56	2	2	1	1	0	5	3	4	14	13
12/12/2019	61	0	0	4	5	0	3	5	9	11	11
12/17/2019	50	7	8	3	3	0	3	2	2	0	0
12/18/2019	53	1	2	3	3	0	8	5	4	4	3
12/19/2019	50	1	0	1	2	0	11	10	4	3	4
1/7/2020	49	7	7	8	3	0	7	9	7	7	6
1/8/2020	55	1	3	3	2	0	7	7	12	8	9
1/9/2020	63	0	0	0	0	0	8	5	3	6	5
1/14/2020	57	1	1	3	6	0	8	7	8	6	6
1/15/2020	57	1	3	2	8	0	4	4	4	3	4
1/16/2020	45	1	1	1	1	0	5	5	5	1	3
1/28/2020	52	1	3	3	3	0	3	3	3	4	3
1/29/2020	67	1	1	2	1	0	4	3	3	4	4
1/30/2020	56	4	4	3	3	0	3	1	1	1	1
Grand Total	1493	71	88	82	85	0	138	124	126	122	121

Pivot Moreno Exit

Date	COUNTA of Name	SUM of Peak AM 7-8	SUM of Peak AM 7:15-8:15	SUM of Peak AM 7:30-8:30	SUM of Peak AM 7:45-8:45	SUM of Peak AM 8-9	SUM of Peak PM 4-5	SUM of Peak PM 4:15-5:15	SUM of Peak PM 4:30-5:30	SUM of Peak PM 4:45-5:45	SUM of Peak PM 5-6
11/5/2019	51	2	3	2	2	0	3	2	2	3	4
11/6/2019	48	3	1	1	1	0	4	5	4	3	3
11/7/2019	62	1	2	2	2	0	2	4	6	5	6
11/12/2019	49	4	3	2	2	0	3	4	3	3	1
11/13/2019	56	2	4	5	4	0	2	4	7	7	8
11/14/2019	53	4	2	2	2	0	4	4	6	6	6
11/19/2019	64	3	4	5	4	0	4	6	6	7	6
11/20/2019	57	2	5	5	4	0	5	3	4	3	7
11/21/2019	48	2	4	3	4	0	6	6	3	2	3
12/3/2019	51	4	4	3	3	0	6	3	4	3	1
12/4/2019	50	3	4	5	6	0	1	2	2	1	2
12/5/2019	61	1	2	2	2	0	3	5	6	5	5
12/10/2019	52	0	1	1	1	0	3	4	4	3	4
12/11/2019	56	3	3	1	1	0	1	1	1	2	4
12/12/2019	60	0	0	1	1	0	8	8	9	9	4
12/17/2019	56	4	4	4	3	0	4	5	4	5	2
12/18/2019	70	1	1	2	3	0	4	5	7	7	6
12/19/2019	51	1	1	0	0	0	7	9	7	4	3
1/7/2020	45	3	3	2	3	0	7	6	4	4	4
1/8/2020	52	1	2	2	1	0	5	4	2	3	4
1/9/2020	51	1	0	0	0	0	2	4	2	2	3
1/14/2020	52	4	5	7	4	0	4	6	4	3	4
1/15/2020	54	1	1	2	2	0	2	2	3	4	4
1/16/2020	40	1	2	2	3	0	4	4	4	4	1
1/28/2020	45	1	1	2	2	0	4	4	4	3	4
1/29/2020	55	2	2	2	1	0	7	7	4	4	4
1/30/2020	57	1	3	3	3	0	5	4	2	1	3
Grand Total	1446	55	67	68	64	0	110	121	114	106	106

PIVOT DHS Storage Entry

Date	COUNTA of Name	SUM of Peak AM 7-8	SUM of Peak AM 7:15-8:15	SUM of Peak AM 7:30-8:30	SUM of Peak AM 7:45-8:45	SUM of Peak AM 8-9	SUM of Peak PM 4-5	SUM of Peak PM 4:15-5:15	SUM of Peak PM 4:30-5:30	SUM of Peak PM 4:45-5:45	SUM of Peak PM 5-6	
11/5/2019	28	1	0	0	0	1	0	9	10	10	7	2
11/6/2019	37	2	2	1	1	0	0	1	2	2	2	2
11/7/2019	44	2	2	1	1	0	4	3	2	3	7	7
11/12/2019	34	2	4	5	5	0	11	7	7	3	2	2
11/13/2019	43	5	3	4	4	0	9	8	3	4	2	2
11/14/2019	40	2	3	4	5	0	2	1	1	1	1	1
11/19/2019	48	0	0	0	1	0	5	1	2	4	5	5
11/20/2019	32	3	3	3	3	0	0	2	2	2	2	2
11/21/2019	43	2	5	5	4	0	6	3	3	3	2	2
12/3/2019	42	3	5	4	3	0	8	8	7	2	3	3
12/4/2019	33	6	6	5	1	0	4	4	4	4	4	4
12/5/2019	48	1	1	0	1	0	14	10	2	2	3	3
12/10/2019	50	3	3	4	2	0	7	4	4	1	1	1
12/11/2019	58	2	3	4	3	0	4	8	8	8	7	7
12/12/2019	42	2	2	1	3	0	5	7	8	7	5	5
12/17/2019	35	0	3	5	5	0	2	1	2	4	5	5
12/18/2019	61	2	3	3	6	0	8	8	8	4	4	4
12/19/2019	42	1	1	2	3	0	6	4	5	3	1	1
1/7/2020	61	5	5	4	3	0	7	6	5	6	5	5
1/8/2020	44	0	0	0	0	0	12	12	4	4	4	4
1/9/2020	50	5	4	5	4	0	2	4	4	12	14	14
1/14/2020	46	2	3	3	4	0	5	3	4	5	4	4
1/15/2020	54	5	4	4	3	0	6	4	2	4	3	3
1/16/2020	57	3	3	3	4	0	10	13	11	11	7	7
1/28/2020	32	4	4	3	3	0	2	2	2	2	2	2
1/29/2020	42	2	1	1	1	0	8	9	10	9	3	3
1/30/2020	44	1	1	0	2	0	1	1	3	3	3	3
Grand Total	1190	66	74	74	75	0	158	145	125	120	103	103

PIVOT DHS Storage Exit

Date	COUNTA of Name	SUM of Peak AM 7-8	SUM of Peak AM 7:15-8:15	SUM of Peak AM 7:30-8:30	SUM of Peak AM 7:45-8:45	SUM of Peak AM 8-9	SUM of Peak PM 4-5	SUM of Peak PM 4:15-5:15	SUM of Peak PM 4:30-5:30	SUM of Peak PM 4:45-5:45	SUM of Peak PM 5-6
11/5/2019	26	1	1	0	0	0	1	16	26	26	26
11/6/2019	34	1	2	1	1	0	2	1	0	0	3
11/7/2019	39	4	4	4	1	0	4	4	3	3	1
11/12/2019	27	1	2	2	10	0	6	3	4	4	1
11/13/2019	41	4	3	3	2	0	7	6	4	4	2
11/14/2019	40	1	1	2	2	0	2	1	1	0	1
11/19/2019	41	1	0	0	1	0	3	2	2	1	1
11/20/2019	31	2	1	3	3	0	1	1	1	1	2
11/21/2019	40	1	3	5	5	0	5	6	3	2	3
12/3/2019	39	3	3	2	1	0	2	5	4	5	4
12/4/2019	32	2	4	4	2	0	6	2	1	2	2
12/5/2019	47	1	1	0	0	0	7	7	5	3	2
12/10/2019	50	0	2	2	2	0	5	6	5	4	4
12/11/2019	55	2	3	6	5	0	5	3	4	5	5
12/12/2019	43	2	2	2	3	0	6	7	8	7	9
12/17/2019	33	0	0	1	2	0	2	2	1	1	1
12/18/2019	58	2	2	2	4	0	6	5	3	4	4
12/19/2019	45	1	1	1	1	0	5	4	5	4	4
1/7/2020	58	5	5	5	2	0	9	8	5	5	5
1/8/2020	44	0	0	0	0	0	4	2	3	4	5
1/9/2020	46	3	3	2	2	0	2	1	3	3	2
1/14/2020	47	1	2	4	4	0	1	3	3	6	8
1/15/2020	53	3	6	6	5	0	9	7	6	4	1
1/16/2020	53	3	3	1	2	0	7	8	7	10	7
1/28/2020	33	2	3	3	3	0	1	0	1	2	3
1/29/2020	40	3	2	1	0	0	5	6	6	7	3
1/30/2020	46	1	1	1	1	0	1	1	5	6	5
Grand Total	1141	50	60	63	64	0	114	117	119	123	114

PIVOT DHS RV Entry

Date	COUNTA of Name	SUM of Peak AM 7-8	SUM of Peak AM 7:15-8:15	SUM of Peak AM 7:30-8:30	SUM of Peak AM 7:45-8:45	SUM of Peak AM 8-9	SUM of Peak PM 4-5	SUM of Peak PM 4:15-5:15	SUM of Peak PM 4:30-5:30	SUM of Peak PM 4:45-5:45	SUM of Peak PM 5-6
11/5/2019	25	0	0	0	0	0	0	0	0	0	0
11/6/2019	29	1	1	1	1	0	0	3	4	3	2
11/7/2019	24	1	1	1	1	0	3	3	5	3	2
11/12/2019	19	0	0	0	0	0	1	3	3	3	2
11/13/2019	18	0	0	0	0	1	0	0	0	0	0
11/14/2019	26	1	1	1	2	0	2	0	0	0	0
11/19/2019	19	1	3	3	3	0	1	0	0	0	0
11/20/2019	25	3	3	2	1	0	1	3	3	2	2
11/21/2019	28	3	2	2	3	0	0	1	1	1	4
12/3/2019	22	0	0	1	1	0	3	3	3	2	1
12/4/2019	12	0	0	0	0	0	0	0	0	0	0
12/5/2019	31	3	3	2	1	0	1	0	0	0	1
12/10/2019	25	0	0	0	0	0	4	2	1	1	1
12/11/2019	22	0	0	0	1	0	1	1	1	1	1
12/12/2019	20	1	1	1	2	0	2	2	3	2	2
12/17/2019	20	1	1	1	1	0	2	2	1	1	0
12/18/2019	27	1	1	1	1	0	2	2	2	1	1
12/19/2019	26	0	1	1	3	0	3	2	1	1	1
1/7/2020	35	0	0	1	1	0	0	3	4	6	6
1/8/2020	16	0	0	1	1	0	0	0	0	0	0
1/9/2020	18	0	0	0	0	0	1	1	2	2	1
1/14/2020	18	1	1	1	2	0	2	4	2	2	2
1/15/2020	29	1	1	2	1	0	5	4	4	1	2
1/16/2020	28	3	2	2	1	0	7	2	1	1	0
1/28/2020	23	1	0	1	1	0	2	1	1	1	0
1/29/2020	26	0	0	0	1	0	0	0	1	1	1
1/30/2020	31	0	1	1	1	0	2	2	2	2	1
Grand Total	642	22	23	26	30	0	48	45	44	36	34

PIVOT DHS RV Exit

Date	COUNTA of Name	SUM of Peak AM 7-8	SUM of Peak AM 7:15-8:15	SUM of Peak AM 7:30-8:30	SUM of Peak AM 7:45-8:45	SUM of Peak AM 8-9	SUM of Peak PM 4-5	SUM of Peak PM 4:15-5:15	SUM of Peak PM 4:30-5:30	SUM of Peak PM 4:45-5:45	SUM of Peak PM 5-6
11/5/2019	25	0	0	0	0	0	3	2	0	0	0
11/6/2019	28	2	2	2	2	0	1	1	2	2	2
11/7/2019	25	0	1	1	1	0	3	3	5	4	2
11/12/2019	18	0	0	0	0	0	0	2	5	5	5
11/13/2019	20	0	0	0	0	0	0	0	0	0	0
11/14/2019	26	0	1	1	1	0	2	2	0	0	0
11/19/2019	22	1	1	2	2	0	2	1	0	0	1
11/20/2019	24	3	3	2	2	0	3	6	7	6	5
11/21/2019	27	2	2	2	3	0	1	0	1	1	3
12/3/2019	21	0	0	1	1	0	3	3	2	3	1
12/4/2019	12	0	0	0	0	0	1	1	0	0	0
12/5/2019	34	3	4	4	3	0	1	0	1	1	2
12/10/2019	27	0	0	0	0	0	4	2	2	1	1
12/11/2019	22	0	0	0	0	0	2	2	1	1	1
12/12/2019	24	1	1	1	2	0	2	4	5	4	3
12/17/2019	18	1	1	1	1	0	2	2	3	2	1
12/18/2019	27	0	0	1	1	0	3	3	3	2	2
12/19/2019	23	1	1	1	3	0	2	2	2	2	1
1/7/2020	35	0	0	1	1	0	2	0	2	3	4
1/8/2020	16	0	0	0	1	0	0	1	1	1	1
1/9/2020	17	0	0	0	0	0	1	2	2	2	2
1/14/2020	21	0	1	1	2	0	2	3	3	3	2
1/15/2020	29	1	1	2	2	0	7	6	6	6	4
1/16/2020	29	2	2	2	2	0	3	4	5	3	2
1/28/2020	25	2	0	0	0	0	3	1	1	2	1
1/29/2020	24	0	0	0	0	0	0	0	1	1	2
1/30/2020	32	1	0	0	1	0	2	3	2	1	2
Grand Total	651	20	21	25	31	0	55	56	62	56	50