



Notice of Availability of Draft Supplemental Environmental Impact Report: Regional Wastewater Control Facility Modifications Project

Date: February 25, 2022

Subject: **Notice of Availability of a Draft Supplemental Environmental Impact Report for the City of Stockton Regional Wastewater Control Facility Modifications Project**

Lead Agency: City of Stockton Municipal Utilities Department

Project Title: Regional Wastewater Control Facility Modifications Project (Project No. M16022)

State Clearinghouse No.: 2018092017

Project Location: City of Stockton

The City of Stockton (Lead Agency) has prepared a draft supplemental environmental impact report (Draft Supplemental EIR) for the Regional Wastewater Control Facility (RWCF) Modifications Project (project) pursuant to the California Environmental Quality Act (CEQA) Guidelines. The Draft Supplemental EIR addresses a change in the location of the outfall used by the RWCF to discharge effluent to the San Joaquin River, relative to that described and assessed in the RWCF Modifications Project EIR, certified by the City in March 2019.

Project Location

The project is located at the City's RWCF, along the east bank of the San Joaquin River, south of the Santa Fe Railroad bridge in Stockton, California, as shown in Exhibit 1.

Project Description

As originally proposed, the RWCF Modifications Project involved constructing facilities that use the existing outfall on the west bank to discharge final effluent to the San Joaquin River. The City now proposes to relocate the RWCF outfall to the east side of the San Joaquin River, at the site of a previously abandoned outfall. The relocation consolidates RWCF effluent disposal facilities, and operations and maintenance activities at the main plant site. The proposed project consists of three primary elements listed below:

- ▲ Reinstatement of an existing 60-inch reinforced concrete pipe running from the RWCF to the abandoned outfall apron on the east bank of the San Joaquin River;
- ▲ Modification of the outfall apron structure to create a new outfall outlet; and
- ▲ Construction of a pipeline running from the Final Effluent Pump Station to the reinstated 60-inch reinforced concrete pipe.

Upon the successful commissioning and reinstatement of the main plant east discharge outfall, the existing outfall on the west side of the river would no longer be required and would be abandoned in place.

Draft Supplemental Environmental Impact Report

Pursuant to State CEQA Guidelines, the Supplemental EIR need contain only the information necessary to make the previous EIR adequate for the revised project. This Draft Supplemental EIR evaluates the environmental resource areas listed below, in which the project was determined to have the potential for new direct, indirect, or cumulative effects.

- ▲ Hydrology and Water Quality.
- ▲ Terrestrial Biological Resources.
- ▲ Aquatic Biological Resources.

The Draft Supplemental EIR identified less-than-significant impacts to hydrology and water quality, and potentially significant impacts that can be mitigated to a less-than-significant level for terrestrial and aquatic biological resources.

Hazardous Materials/Waste Disclosure

On the project site there are no hazardous waste sites listed in the EnviroStor and Geotracker databases maintained pursuant to Government Code Section 65962.5.

Public Review

The Draft Supplemental EIR is available for public review at <http://www.stocktonca.gov/mudprojects> and the following locations:

City of Stockton, City Clerk
425 N. El Dorado Street, 1st Floor
Stockton, CA 95202
Monday–Thursday

Cesar Chavez Central Library
605 N. El Dorado Street
Stockton, CA 95202
Monday–Saturday

The 45-day review period begins on February 25, 2022, and ends on April 11, 2022. Comments regarding the Draft Supplemental EIR should be submitted to:

Deedee Antypas, Deputy Director of Wastewater
City of Stockton Municipal Utilities Department
2500 Navy Drive Stockton, CA 95206
Telephone: (209) 937-7425
Email: deedee.antypas@stocktonca.gov

Comments provided by email should include “RWCF Modifications Project (M16022) Draft Supplemental EIR Comments” in the subject line, and the name and physical address of the commenter in the body of the email. Comments must be received, in writing, by 5:00 p.m. on April 11, 2022.

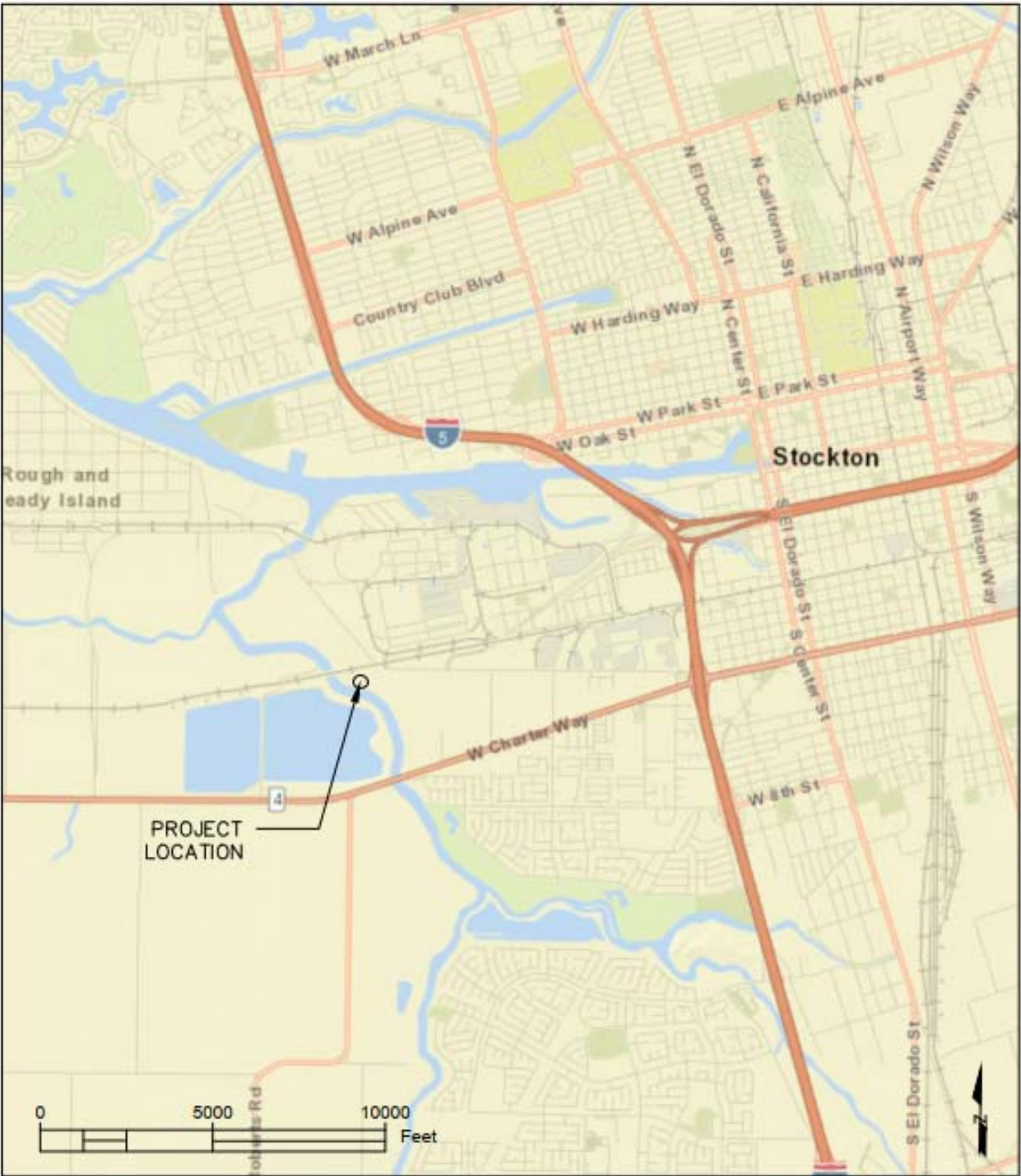


Exhibit 1

Project Location